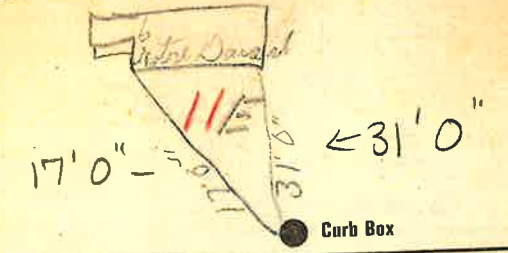


Labor and Materials

1	Copper	Connection	3/4"	\$ 2.60
	Lead			
1	Curb	Cock Valve T-S & V.	3/4" in.	\$ 2.27
1	Service Box	Short 3/4" x 1/2"		\$ 1.59
	Old returned	Long 4 1/2" x 5 1/2"	Buff. or Rdway	
8	Ft.	3/4" in.	Copper Galv. Iron Cast-Iron	Pipe at \$ 1.44
	Nipples	in. at		\$
	Bushings	to in. at		\$
	Red'g Inc'g	Couplings	to in. at	\$
	Union	in. at		\$
	Meter	in. at		\$
	Lbs. Br. Stone	at		\$
	Lbs. Sand	at		\$
	Bags Cement	at		\$
	Paving Brick	Mack Red Asphalt	at	\$
	Lead Joints	at		\$
	Leadite Joints	at		\$
5	Hrs. Foreman	at		\$ 3.13
2.0	Hrs. Common Labor	at		\$ 9. -
	Hrs. Common Labor	at		\$
	Hrs. Mason	at		\$
	Hrs. Mason's Helper	at		\$
1	Hrs. Compressor	at		\$ 1.50
	Compensation Ins			\$ 37
	Trucking			\$ 1. -
	Builders' Use of Water	Patch		\$ 28. -
Total \$				45.90

31-30 **11E** May 21 1931
Labor and Material Report

3/4" tap at 6 Notre Dame at



6" Main Elev of Main at tap 4 ft
 Gate at ● ● Gate at

● Curb Box
 Old tap shut off