

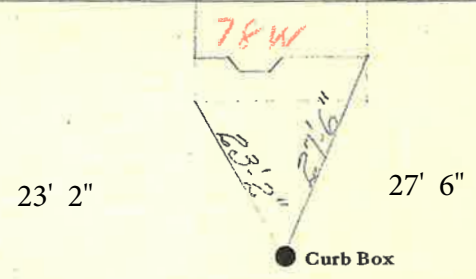
LABOR AND MATERIALS

Copper	}	Connection.....		\$	
Lead					
Curb	{	Cock Valve in.	\$	
		T. S. & V.			
Service Box	{	Short 3½x4½	}.....	\$	
Old returned		Long 4½x5½			
		Buffer Rdway			
27' 3/4"	{	Copper	} Pipe at.....	\$	
Ft. in.		Gal. Iron			
		Cast Iron			
Nipples.....	in. at			\$	
Bushings.....	to.....	in. at		\$	
Red'g	{	Couplings.....	to.....	in. at	\$
Inc'g					
Union.....	in. at			\$	
Meter.....	in. at			\$	
Lead Joints at				\$	
Leadite Joints at				\$	
Hrs. Foreman at				\$	
Hrs. Chauffeur at				\$	
Hrs. Tapper at				\$	
Hrs. Labor at				\$	
Hrs. Labor at				\$	
Hrs. Compressor at				\$	
Compensation Ins.				\$	
Trucking				\$	
Builders Use of Water				\$	
				\$	
				\$	
				\$	
				\$	
				\$	
				\$	
				\$	

St. 78W
 -Ph
 Ave. No. 80

Name of Owner
Notre Dame
 Tax ID # 302.19-28-17

Labor and Mat'l. Report AUG 25 1939 19



Main	Elev. of Main at tap.....
Gate at ●	● Gate at

● Curb Box

NEW COPPER SERVICE -
 OCT. 11, 2000