

## LABOR AND MATERIALS

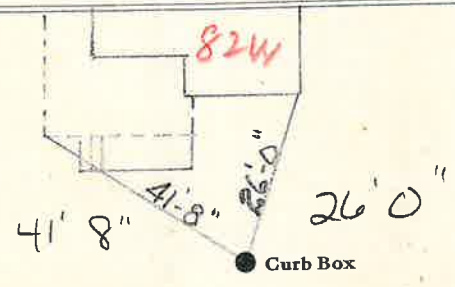
Copper	}	Connection			\$
Lead					
Curb	{	Cock Valve T. S. & V.			\$
			in.		
Service Box	{	Short 3½x4½ Long 4½x5½ Buffer Rdway			\$
Old returned					
Ft.	{	Copper Galv Iron Cast Iron			\$
in.			Pipe at		
Nipples	in.	at			\$
Bushings	to	in.	at		\$
Red'g Inc'g	}	Couplings			\$
			to	in.	at
Union	in.	at			\$
Meter	in.	at			\$
Lead Joints	at				\$
Leadite Joints	at				\$
Hrs. Foreman	at				\$
Hrs. Chauffeur	at				\$
Hrs. Tapper	at				\$
Hrs. Labor	at				\$
Hrs. Labor	at				\$
Hrs. Compressor	at				\$
Compensation Ins.					\$
Trucking					\$
Builders Use of Water					\$
					\$
					\$
					\$
					\$
					\$
					\$

St. 82W  
 Pt.  
 Ave. No. 82

Notre Dame

Name of Owner  
 Tax ID # 302.19-28-18

Labor and Mat'l. Report AUG 25 1939 19



	Elev. of Main at tap.....
..... Main	
Gate at ●	● Gate at

● Curb Box