

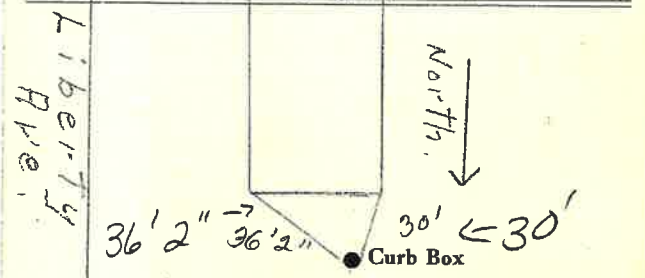
LABOR AND MATERIALS

1	Copper Lead	Connection	3/4"	\$
1	Curb	Cock Valve T.S. & V.	3/4 in.	\$
1	Service box	} Short 3 1/2 x 4 1/2 Long 4 1/2 x 5 1/2 Buff or Rdway		\$
	Old returned			
28	3/4 in.		Copper G.I. C.I.	Pipe at
	Nipples	in. at		\$
	Bushings	to in. at		\$
	Red'g Inc'g	Coupl'gs to in. at		\$
	Union	in. at		\$
	Meter	in. at		\$
	Lead Joints	at		\$
	Compound Joints	at		\$
	Maintenance Foreman			\$
	Hrs. Water Maint. Man-1	at		\$
	Hrs. Water Maint. Man-2	at		\$
	Hrs. Garage Foreman	at		\$
	Hrs. Labor	at		\$
	Hrs. Compressor	at		\$
	Compensation Ins.	at \$ per C		\$
	Trucking			\$
	Pav't Patch			\$
	Tap by Gifford & Co.	1-7-58		\$
	O'head			\$

W. Notre Dame St. Pl. No. 84

Name of Owner
Bartlett

Labor and Mat'l. Report Jan 7 19 59



W. Notre Dame St.
6" Main Elev. of Main at tap 47.5'

Gate at ● Gate at ●

● Curb Box