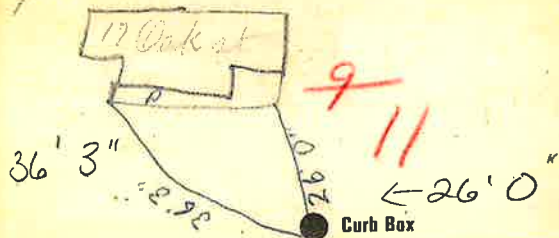


### Labor and Materials

1	Copper	Connection	3/4	\$	2.60
	Lead				
1	Curb	Cock Valve	3/4 in.	\$	2.27
		F.S. & V.			
1	Service Box	Short	3/4 x 1/2	\$	1.38
	Old returned	Long	1/2 x 1/2		
		Buff or Rdway			
4	Ft.	Copper	3/4 in.	\$	1.08
		Galv. Iron	Pipe at		
		Cast Iron			
	Nipples		in. at	\$	
	Bushings		to in. at	\$	
	Red'g	Couplings	to in. at	\$	
	Inc'g				
	Union		in. at	\$	
	Meter		in. at	\$	
	Lbs. Br. Stone		at	\$	
	Lbs. Sand		at	\$	
	Bags Cement		at	\$	
	Paving Brick	Mack	at	\$	
		Red			
		Asphalt			
	Lead Joints		at	\$	
	Leadite Joints		at	\$	
3	Hrs. Foreman		at	\$	1.88
6	Hrs. Common Labor	Tapper	at	\$	3.00
6	Hrs. Common Labor		at	\$	2.70
	Hrs. Mason		at	\$	
	Hrs. Mason's Helper		at	\$	
	Hrs. Compressor		at	\$	
	Compensation Ins.			\$	23
	Trucking			\$	1.00
	Builders' Use of Water	Patch		\$	5.00
				Total \$	21.14

31-144 *11*  
Labor and Material Report *Oct 5* 1931

*3/4" tap at 17 Oak st*



*6" Main*

Elev of Main at tap

Gate at

Gate at

*TAX 10# 303.17-20-11*

● Curb Box

*Old tap shut off*

*John J. Gregory*

*New-curb box to Main-5/87*

*\* Gas, sewer & water services are close to each other.*