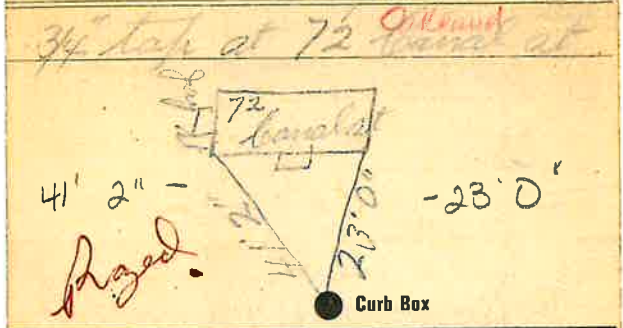


**Labor and Materials**

1	Copper } Connection		\$ 3.20
	Lead		
1	Curb { Cock Valve } .34" in.		\$ 1.00
	T. S. & V.		
1	Service Box { Short 3 1/2 x 4 1/2 } Old-returned { Long 4 1/2 x 5 1/2 } Buff. or Rdway		\$ 1.30
2 1/2	Ft. 3/4" in. { Copper } Pipe at		\$ .55
		{ Galv. Iron } { Cast Iron }	
1	Nipples 1/2" in. at		\$ .12
1	Bushings 3/4" to 1/2" in. at		\$ .15
1	Red 1/2" } Couplings 2 1/2" in. at		\$ .12
	Inc'g }		
	Union..... in. at		\$
	Meter..... in. at		\$
	Lbs. Br. Stone at		\$
	Lbs. Sand at		\$
	Bags Cement at		\$
	Paving Brick { Mack } at		\$
		{ Red } { Asphalt }	
	Lead Joints at		\$
	Leadite Joints at		\$
4	Hrs. Foreman at 6.25		\$ 25.00
5	Hrs. Common Labor at 5.00		\$ 25.00
6	Hrs. Common Labor at 4.00		\$ 24.00
	Hrs. Mason at		\$
	Hrs. Mason's Helper at		\$
	Hrs. Compressor at		\$
	Compensation Ins.		\$ 2.10
	Trucking		\$ 1.00
	Builders' Use of Water		\$
Total			\$ 150.90

26-154 72  
**Labor and Material Report** Sept 25 1926



1 1/2" Main Elev. of Main at tap 4.11  
 Gate at ● ● Gate at

● Curb Box

#70 - #80  
 Oakland  
 TAX ID# 310,5-3-15

### Labor and Materials

1	Copper } Connection	3/4			\$ 320
1	Curb } Cock Valve	3/4	in.		\$ 180
2 No.	Service Box } Short 3 1/2 x 4 1/2				
	Old returned } Long 4 1/2 x 5 1/2				
			Buff. or Rdway		
15	Ft. } 3/4 in. } Copper Galv. Iron } Pipe at				\$ 330
			Cast Iron		
	Nipples		in. at		\$
	Bushings		to..... in. at		\$
	Red'g } Couplings		to..... in. at		\$
	Inc'g }				
	Union		in. at		\$
	Meter		in. at		\$
	Lbs. Br. Stone		at		\$
	Lbs. Sand		at		\$
	Bags Cement		at		\$
	Paving Brick } Mack Red Asphalt		at		\$
	Lead Joints		at		\$
	Leadite Joints		at		\$
	Hrs. Foreman		at		\$
	Hrs. Common Labor		at		\$
13	Hrs. Common Labor		at		\$ 528
	Hrs. Mason		at		\$
	Hrs. Mason's Helper		at		\$
	Hrs. Compressor		at		\$
	Compensation Ins.				\$ 14
1	Trucking				\$ 170
	Builders' Use of Water				\$
Total \$					1392

74+76

**Labor and Material Report** June 27 1927

3/4" tap at 74476 ~~74476~~ ~~74476~~

18' 6"      22' 5"      7' 6"

● Curb Box

---

6' Main      Elev. of Main at tap 4111

Gate at ●      ● Gate at

● Curb Box

### Labor and Materials

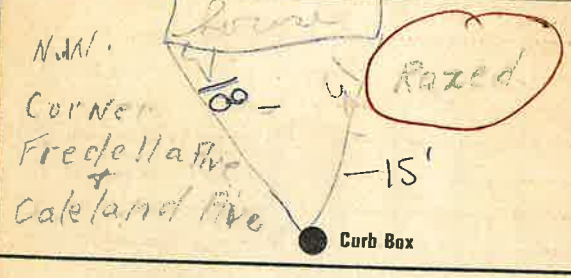
1	Copper } Connection. $\frac{3}{4}$	\$ 320
	Lead }	
1	Curb { Cock Valve } 7 in.	\$ 180
	{ T. S. & V. }	
1	Service Box { Short $3\frac{1}{2}$ x 4\frac{1}{2} } \$ 140	
	Old returned { Long $4\frac{1}{2}$ x $5\frac{1}{2}$ } { Buff. or Rdway }	
13	Ft. $\frac{3}{4}$ in. { Copper Galv. Iron } Pipe at	\$ 286
	{ Cast Iron }	
	Nipples..... in. at.....	\$
	Bushings..... to..... in. at.....	\$
	Red'g } Couplings..... to..... in. at.....	\$
	Inc'g }	
	Union..... in. at.....	\$
	Meter..... in. at.....	\$
	Lbs. Br. Stone at.....	\$
	Lbs. Sand at.....	\$
	Baga Cement at.....	\$
	Paving Brick { Mack } at.....	\$
	{ Red }	
	{ Asphalt }	
	Lead Joints at.....	\$
	Leadite Joints at.....	\$
	Hrs. Foreman at.....	\$
13	Hrs. Common Labor at.....	\$ 528
	Hrs. Common Labor at.....	\$
	Hrs. Mason at.....	\$
	Hrs. Mason's Helper at.....	\$
	Hrs. Compressor at.....	\$
	Compensation Ins.....	\$ 14
1	Trucking.....	\$ 170
	Builders' Use of Water.....	\$
Total \$		1488

### Labor and Material Report

78

19

June 27  
ms 78 ~~Cancelled~~



6" Main Elev. of Main at tap 5'

Gate at ● ● Gate at

● Curb Box

Old Tap not off.