

LABOR AND MATERIALS

/ Copper Lead	} Connection	3/4	\$	1.35
/ Curb	} Cock Valve F. S. & V.	3/4 in.	\$	1.80
/ Service Box Old returned	} Short 3 1/4 x 4 1/4 Long 4 1/4 x 5 1/4 Buffer-Rdway		\$	1.70
14 Ft. 3/4 in.	} Copper Galv-Iron Cast-Iron	Pipe at 18	\$	2.52
Nipples in. at		\$	
Bushings to	in. at	\$	
Red'g Inc'g	} Couplings to	in. at	\$
Union in. at		\$	
Meter in. at		\$	
Lead Joints	at		\$	
Leadite Joints	at		\$	
Hrs. Foreman	at		\$	
1 Hrs. Chauffeur	at	6 2/4	\$	62
2 Hrs. Tapper	at	1 1/4	\$	1.25
10 Hrs. Labor	at	45	\$	4.50
Hrs. Labor	at		\$	
Hrs. Compressor	at		\$	
Compensation Ins.			\$	20
Trucking			\$	1-
Builders Use of Water	Before Paving		\$	
					\$ 14.95

5 6 1941

St. 17
Pt. 15
Ave. No. 15

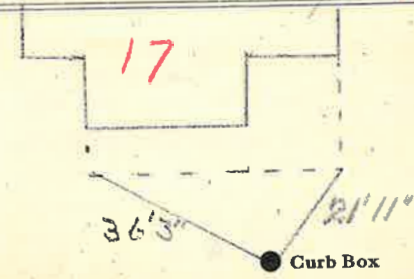
Name of Owner

Mrs Anna Lindsay

Labor and Mat'l. Report

May 24

1941



Main Elev. of Main at tap 5

Gate at ● ● Gate at

● Curb Box

TAX ID # 302.16-5-23