

Labor and Materials

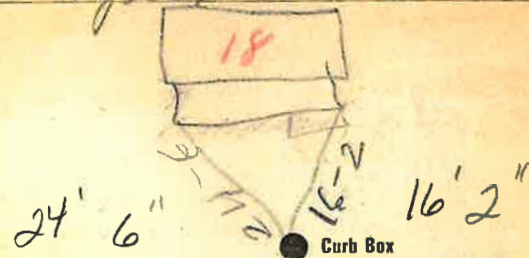
Copper	Connection	2	\$ 2.60
Lead		4	
Curb	Cock Valve	2	\$ 2.30
	T.S. & V.	1	
Service Box	Short 3/4x1 1/2		\$ 1.40
Old returned	Long 1 1/2x5 1/2		
	Buff. or Rdway		
2 1/2 ft.	Copper Galv. Iron	3	\$ 6.63
	Cast Iron	4	
Nipples	in. at		\$
Bushings	to in. at		\$
Red'g Inc'g	Couplings to in. at		\$
Union	in. at		\$
Meter	in. at		\$
Lbs. Br. Stone	at		\$
Lbs. Sand	at		\$
Bags Cement	at		\$
Paving Brick	Mack Red Asphalt at		\$
Lead Joints	at		\$
Leadite Joints	at		\$
3 Hrs. Foreman	at		\$ 1.88
4 Tapper	at		\$ 2.00
1.4 Hrs. Common Labor	at		\$ 5.69
Hrs. Mason	at		\$
Hrs. Mason's Helper	at		\$
Hrs. Compressor	at		\$
Compensation Ins			\$ 25
Trucking			\$ 1.00
Builders' Use of Water	Patch		\$ 5.00
Total			\$ 28.75

29-57

Labor and Material Report

May 18 1929

16 Ogden



4 Main

Elev of Main at tap

Gate at ●

● Gate at

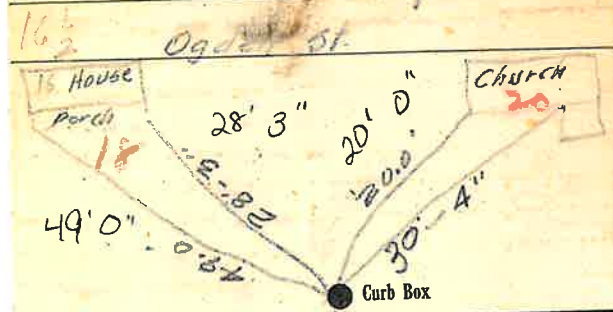
● Curb Box

Old tap disconnected

TAX ID # 302.16-4-8.2

Labor and Materials

.....Copper } Connection.....	\$.....
.....Lead }	\$.....
.....Curb { Cock }	\$.....
.....T.S.&V. { Valve }	\$.....
.....Service Box { Short 3 1/2 x 4 1/2 }	\$.....
.....Old returned { Long 4 1/2 x 5 1/2 }	\$.....
.....Buff. or Rdw. { }	\$.....
.....Ft. in. { Copper } Pipe at	\$.....
.....Galv. Iron { }	\$.....
.....Cast Iron { }	\$.....
.....Nipples in. at	\$.....
.....Bushings to in. at	\$.....
.....Red'g } Couplings..... to in. at	\$.....
.....Inc'g { }	\$.....
.....Union..... in. at	\$.....
.....Meter..... in. at	\$.....
.....Lbs. Br. Stone at	\$.....
.....Lbs. Sand at	\$.....
.....Bags Cement at	\$.....
.....Paving Brick { Mack } at	\$.....
.....Red { }	\$.....
.....Asphalt { }	\$.....
.....Lead Joints at	\$.....
.....Leadite Joints at	\$.....
.....Hrs. Foreman at	\$.....
.....Hrs. Common Labor at	\$.....
.....Hrs. Common Labor at	\$.....
.....Hrs. Mason at	\$.....
.....Hrs. Masons Helper at	\$.....
.....Hrs. Compressor at	\$.....
.....Compensation Ins	\$.....
.....Trucking	\$.....
.....Builders Use of Water	\$.....
Total \$.....	



Main _____ Elev. of Main at tap _____
 Gate at ● _____ Gate at ● _____

● Curb Box
 The above measurements are for 16 1/2 Ogden St.