

Labor and Materials

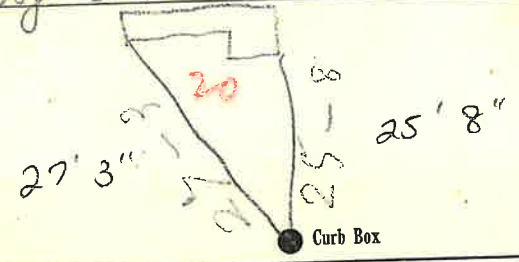
1	Copper	Connection	3/4	\$ 1.75
1	Lead			
1	Curb	Cock Valve T.S.&V.	3/4 in	\$ 1.70
1	Service Box	Short 3 1/2 x 4 1/2		\$ 1.37
	Old returned	Long 4 1/2 x 5 1/2		
		Bottom of Roadway		
26	Ft. 3/4 in.	Copper Galv. Iron Cast Iron	Pipe at 1 1/2	\$ 3.51
	Nipples	in. at		\$
	Bushings	to in. at		\$
	Red'g Inc'g	Couplings	to in. at	\$
	Union	in. at		\$
	Meter	in. at		\$
	Lbs. Br. Stone	at		\$
	Lbs. Sand	at		\$
	Bags Cement	at		\$
	Paving Brick	Mack Red Asphalt	at	\$
	Lead Joints	at		\$
	Leadite Joints	at		\$
A	Hrs. Foreman	at	6 1/2	\$ 2.50
B	Hrs. Common Labor	at	4.5	\$ 3.60
	Hrs. Common Labor	at		\$
	Hrs. Mason	at		\$
	Hrs. Masons Helper	at		\$
	Hrs. Compressor	at		\$
	Compensation Ins			\$.23
	Trucking			\$ 1.50
	Builders Use of Water			\$
Total				\$ 15.16

1935-108

Labor and Material Report

20 8/5 1935

18 Dodge St church



4 Main Elev. of Main at tap 5

Gate at Gate at

Curb Box

new top

Tax ID # 302.16-4-9