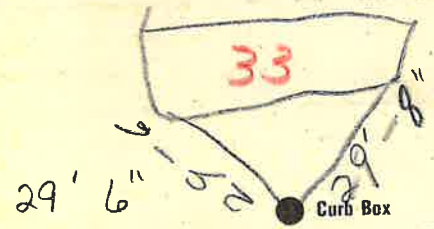


Labor and Materials

Copper } Connection.....	320
Lead }.....	
1. Curb { Cock }..... in.....	1.00
Valve }.....	
T. S. & V. }.....	
Service Box { Short 3 1/2 x 4 1/2 }.....	1.30
Old returned { Long 4 x 6 }.....	
Buff. or Rdway }.....	
10. Ft. in. { Copper } Pipe at 3/4	2.20
Galv. Iron }.....	
Nipples..... in. at.....	\$.....
Bushings..... to..... in. at.....	\$.....
Red'g } Couplings..... to..... in. at.....	\$.....
Inc'g }.....	
Union..... in. at.....	\$.....
Meter..... in. at.....	\$.....
Lbs. Br. Stone at.....	\$.....
Lbs. Sand at.....	\$.....
Bags Cement at.....	\$.....
Paving Brick { Mack } at.....	\$.....
Red }.....	
Asphalt }.....	
Lead Joints at.....	\$.....
Leadite Joints at.....	\$.....
3 Hrs. Foreman at.....	1.87
6 Hrs. Common Labor at.....	2.44
Hrs. Common Labor at.....	\$.....
Hrs. Mason at.....	\$.....
Hrs. Mason's Helper at.....	\$.....
Hrs. Compressor at.....	\$.....
Compensation Ins.....	\$.....
11-25 Trucking.....	1.11
1-25 Builders' Use of Water.....	1.00
Total \$	131.2

27-5 33 Labor and Material Report 29 1927

31 Gdgen St



4 1/2 Main Elev. of Main at tap 4 1/2

Gate at ● ● Gate at

● Curb Box

new house
new top
Tax ID # 302.16-5-15