

LABOR AND MATERIALS

Copper	} Connection		\$	
Lead				
Curb	} Cock Valve } T. S. & V. }	in.	\$	
Service box		} Short 3½ x 4½ Long 4½ x 5½ Buff or Rdway }		\$
Old returned				
6½ Ft. ¾ in.	} Copper G.I. G.I. }		Pipe at	\$
Nipples	in. at		\$	
Bushings	to in. at		\$	
Red'g } Inc'g }	Coupl'gs	to in. at	\$	
Union	in. at		\$	
Meter	in. at		\$	
Lead Joints at			\$	
Compound Joints at			\$	
Maintenance Foreman			\$	
Hrs. Water Maint. Man—1 at			\$	
Hrs. Water Maint. Man—2 at			\$	
Hrs. Garage Foreman at			\$	
Hrs. Labor— at			\$	
Hrs. Compressor at			\$	
Compensation Ins. at \$		per C	\$	
Trucking			\$	
Pav't Patch			\$	
			\$	
			\$	
O'head			\$	
			\$	

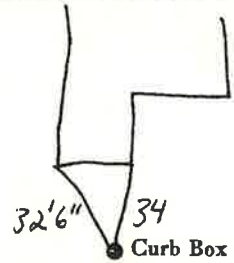
Omeida

St.
Pl.
Ave. No. 23

Name of Owner

Labor and Mat'l. Report

19 85



Main Elev. of
Main at tap

Gate at • • Gate at

• Curb Box

TAX ID # 303.13-15-6

LABOR AND MATERIALS

1	Copper	} Connection		\$ 1.31
	Lead			
1	Curb	{ Cock Valve	{ 3/4 in.	\$ 1.75
		{ T, S. & V. }		
1	Service Box	{ Short 3 1/2 x 4 1/2		\$ 1.60
	Old returned	{ Long 4 1/2 x 5 1/2		
		{ Buffer Rdway }		
9	Ft.	{ Copper	{ Pipe at 18	\$ 1.62
	3/4 in.	{ Galv. Iron		
		{ Cast Iron }		
	Nipples in. at		\$
	Bushings to in. at		\$
	Red'g Inc'g	{ Couplings to in. at	\$
	Union in. at		\$
	Meter in. at		\$
	Lead Joints at			\$
	Leadite Joints at			\$
	Hrs. Foreman at			\$
1 1/2	Hrs. Chauffeur at	6 1/2		\$ 31
1 1/4	Hrs. Tapper at	5		\$ 16
5 3/4	Hrs. Labor at	45		\$ 2.59
	Hrs. Labor at			\$
	Hrs. Compressor at			\$
	Compensation Ins.			\$ 10
	Trucking			\$ 1-
	Builders Use of Water			\$
				\$
				\$
				\$
				\$
	Tap by Hessel			\$
				\$ 10.44

196 - 1940

St.

Dr.

Oneida

Ave. No. 23

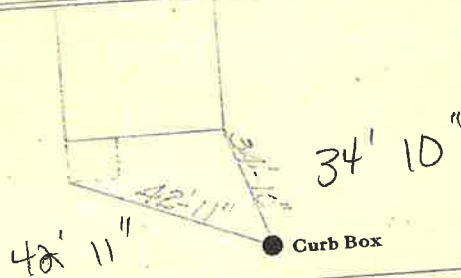
Name of Owner

Ball, Robt.

Labor and Mat'l. Report

NOV 7 - 1940

19



6" Main

Elev. of Main at tap 5'

Gate at ●

● Gate at

● Curb Box