

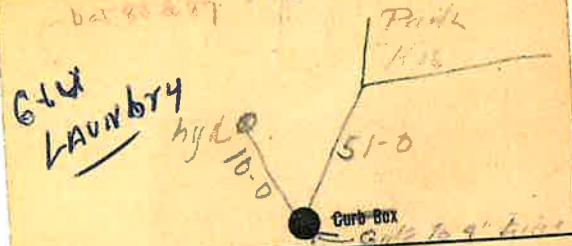
**Labor and Materials**

Lead Connection	\$
Curb Cock	\$
1 Service Box (Short 3 1/2 x 4 1/2) Old returned (Long 4 1/2 x 5 1/2) (Buffalo) Gate Box	\$ 7.00
24 Ft. 4" in. G. I. Pipe at	\$
Nipples in. at	\$
Bushings to in. at	\$
Red'g Coup. to in. at	\$
Inc'g Coup. to in. at	\$
Union in. at	\$
Meter in. at	\$
Cu. Yds. Br. Stone at	\$
Cu. Yds. Sand at	\$
Bags Cement at	\$
Paving Brick (Mack Red Asphalt) at	\$
7 Hrs. Foreman at	\$
16 Hrs. Common Labor at	\$
Hrs. Mason at	\$
Hrs. at	\$
Hrs. at	\$
Builders' Use of Water	\$
1-4x6 Tapping St. + Vt at	\$
25 ft. 1-1/2" Plug at	\$
59 min at	\$
7 min at	\$
Total	\$ 77.66

**Labor and Material Report**

Sept 26 1923

Gate to 9" Tap for Sanitary Pools



6" Main  
Elev. of Main at tap 44  
Gate at ● Gate at ●

● Curb Box