

### LABOR AND MATERIALS

1	Copper Lead	Connection		\$	
1	Curb	Cock Valve T. S. & V.	}	3/4 in.	\$
	Service box Old returned	Short 3 1/2 x 4 1/2 Long 4 1/2 x 5 1/2 Buff or Rdway	}		\$
9	Ft.	3/4 in.	}		\$
		Copper G. I. C. I.	}		\$
	Nipples	in. at		\$	
1	Bushings	3/4 to 1/2 in. at		\$	
	Red'g Inc'g	Coupl'gs	to	in. at	\$
	Union	in. at		\$	
	Meter	in. at		\$	
	Lead Joints	at		\$	
	Compound Joints	at		\$	
7	Maintenance Foreman			\$	
	Hrs. Water Maint. Man-1	at		\$	
	Hrs. Water Maint. Man-2	at		\$	
	Hrs. Garage Foreman	at		\$	
8	Hrs. Labor	at		\$	
	Hrs. Compressor	at		\$	
	Compensation Ins. at \$	per C		\$	
	Trucking			\$	
	Pav't Patch			\$	
	Truck 1,000			\$	
	Do builders use			\$	
	of water			\$	
	O'head			\$	

Capital Equip  
City Card.

St. 100  
Pl. 52  
Ave. No. 52

Name of Owner \_\_\_\_\_

\_\_\_\_\_

Labor and Mat'l. Report \_\_\_\_\_

Sept 8-15 1923

Elev. of Main at tap 4 1/2

● Curb Box

Lawn Top for  
Glens Falls Hospital  
Near Park Place.

LSM-5C-3-10-61

### LABOR AND MATERIALS

1	Copper	}	Connection	<u>3/4"</u>	\$
	Lead				
1	Curb	}	Cock Valve	<u>3/4" in.</u>	\$
			T. S. & V.		
1	Service box	}	Short 3 1/2 x 4 1/2		
	Old returned		Long 4 1/2 x 5 1/2		
			Buff or Rdway		\$
15	Ft.	}	Copper	Pipe at	\$
	<u>3/4" in.</u>		G. I.		
			C. I.		
	Nipples		in. at		\$
	Bushings		to in. at		\$
	Red'g	}	Coupl'gs	to in. at	\$
	Inc'g				
	Union		in. at		\$
	Meter		in. at		\$
	Lead Joints at				\$
	Compound Joints at				\$
	Maintenance Foreman				\$
	Hrs. Water Maint. Man—1 at				\$
	Hrs. Water Maint. Man—2 at				\$
	Hrs. Garage Foreman at				\$
	Hrs. Labor— at				\$
	Hrs. Compressor at				\$
	Compensation Ins. at \$		per C		\$
	Trucking				\$
	Pav't Patch				\$
	Tap by Gifford & Co				\$
	<u>Apr. 11-68</u>				\$
	O'head				\$

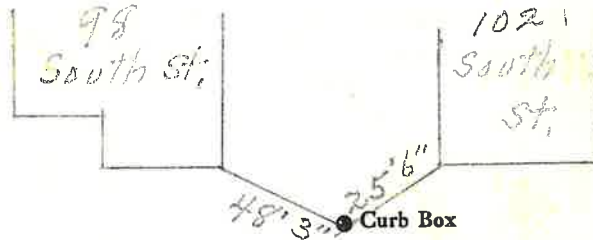
St.  
-Pl.-  
-Ave.- No. 95 1/2

Name of Owner

G. F. Hospital

Labor and Mat'l. Report

April 11 1968



10" Main

Elev. of Main at tap 5-6'

Gate at ●

● Gate at

Shut off at Curb 4/2/74

● Curb Box

This Tap on South St  
10" main - For  
95 1/2 Park St.

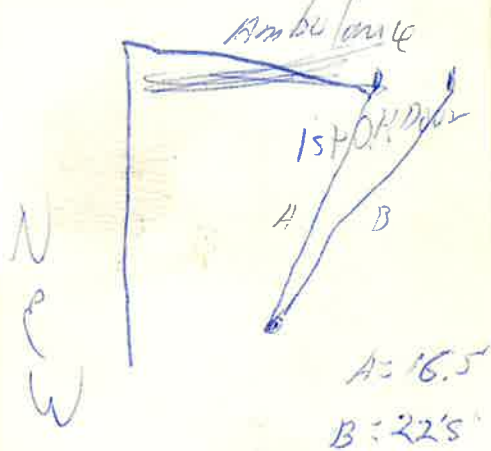
LSM-5C-6.1-67

Curb box inside  
of Walk.

Hospital Outback

48' 6"

- 2" copper  
to curb box



New taps for new  
additions - Oct 14, '88

St.  
~~Pl.~~  
Ave. No. 100R

PARK

Name of Owner

G.F. HOSPITAL - OFFICE BLD.

Labor and Mat'l. Report

1988

● Curb Box

Main

Elev. of  
Main at tap

Gate at ●

● Gate at

● Curb Box

### LABOR AND MATERIALS

Copper	}	Connection	-----	\$	
Lead			-----	\$	
Curb	}	Cock Valve T. S. & V.	-----	in. -----	\$
Service Box			-----	\$	
Old returned	}	Short 3 1/2 x 4 1/2	-----	\$	
		Long 4 1/2 x 5 1/2			
		Buff. or Rdway			
Ft. -----	}	Copper	Pipe at -----	\$	
in. -----		Galv Iron			
		Cast Iron			
Nipples -----	in. at -----	\$			
Bushings -----	to -----	in. at -----	\$		
Red'g	}	Couplings -----	to -----	in. at -----	\$
Inc'g					
Union -----	in. at -----	\$			
Meter -----	in. at -----	\$			
Lead Joints at -----	\$				
Leadite Joints at -----	\$				
Hrs. Foreman at -----	\$				
Hrs. Chauffeur at -----	\$				
Hrs. Tapper at -----	\$				
Hrs. Labor at -----	\$				
Hrs. Labor at -----	\$				
Hrs. Compressor at -----	\$				
Compensation Ins. -----	\$				
Trucking -----	\$				
Builders Use of Water -----	\$				
-----	\$				
-----	\$				
-----	\$				
-----	\$				
-----	\$				
-----	\$				
-----	\$				

St. 100  
 Pt. -----  
 Ave. No. 92

Part -----

Name of Owner  
Glens Falls Hospital

Measured  
Labor and Mat'l. Report Jan. 17 1939

Elev. of Main at tap -----

Gate at ● ----- Gate at ● -----

● Curb Box

~~The curb cost is inside curb.~~  
The gate valves are in the road.

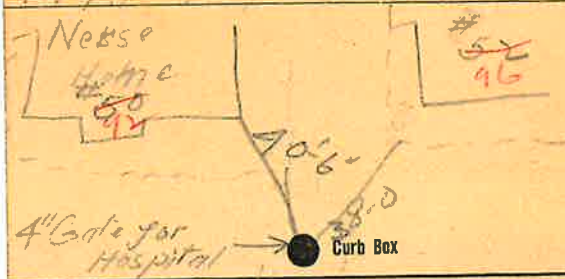
### Labor and Materials

Lead Connection		\$ 35.05
1. Curb-Box	4" Flange Gate	
Service-Box	Short 3 1/2 x 4 1/2	\$ 16.99
Old returned	Long 4 1/2 x 5 1/2	
8. Ft. 4" in. G. I. Pipe at	Gate Box	7.28
Nipples	in. at	\$
Bushings	to in. at	\$
Red'g Coup	to in. at	\$
Inc'g Coup	to in. at	\$
Union	in. at	\$
Meter	in. at	\$
Cu. Yds. Br. Stone at		\$
Cu. Yds. Sand at		\$
Bags Cement at		\$
Paving Brick	{ Mack Red Asphalt } at	\$
10 Hrs. Foreman at		\$ 6.25
14 Hrs. Common Labor at		\$ 5.68
Hrs. Mason at		\$
Hrs.	at	\$
Hrs.	at	\$
Builders' Use of Water		\$
run 2-6" pipes	at	\$ 70
" " " "	at	\$ 60
Thick 100	at	\$ 1.00
1-4" Plug	at	\$ 40
Total		\$ 63.95

### Labor and Material Report

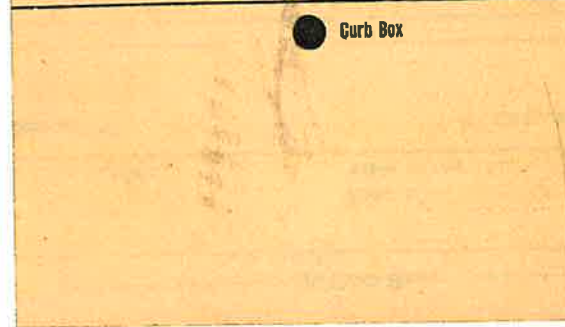
Sept 21 1900

4" Tap for Hospital Main St



6 Main Elev. of Main at tap 4 1/2

Gate at ● Gate at ●



### Labor and Materials

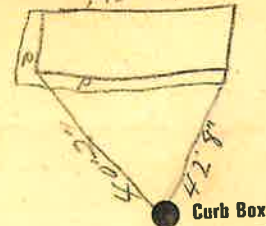
Copper } Connection	.....	\$	
Lead } Connection	.....	\$	
1 Curb } Cook } Meter } T. S. & V. } 6" in.	.....	\$	47.45
1 Service Box } Short 3/4x4 1/2 Old returned } Long 4 1/2x5 1/2 } Gate box	.....	\$	7.50
10 Ft. 6" in. } Copper } Galv. Iron } Pipe at 24 ft Eng	.....	\$	23.80
} Cast Iron	.....	\$	
Nipples..... in. at.....	.....	\$	
Bushings..... to..... in. at.....	.....	\$	
Red'g } Couplings..... to..... in. at.....	.....	\$	
Inc'g } Couplings..... to..... in. at.....	.....	\$	
Union..... in. at.....	.....	\$	
Meter..... in. at.....	.....	\$	
Lbs. Br. Stone at.....	.....	\$	
Lbs. Sand at.....	.....	\$	
Bags Cement at.....	.....	\$	
Paving Brick } Mack } Red } Asphalt } at.....	.....	\$	
4 Lead Joints at.....	115	\$	9.60
Leadite Joints at.....	.....	\$	
2 1/2 Hrs. Foreman at.....	.....	\$	16.25
10 Hrs. Common Labor at.....	.....	\$	5.00
35 Hrs. Common Labor at.....	.....	\$	14.22
Hrs. Mason at.....	.....	\$	
Hrs. Mason's Helper at.....	.....	\$	
Hrs. Compressor at.....	.....	\$	
Compensation Ins.....	.....	\$	9.00
Trucking.....	.....	\$	2.00
Builders' Use of Water.....	.....	\$	
Total \$			116.76

80.00  
11.50  
25.26  
8/5/91

### Labor and Material Report

1928

Date 5  
6" tap at 50 Park at  
Kunza Home



6" Main Elev of Main at tap 4.15

---

Gate at ● ● Gate at

● Curb Box

LABOR AND MATERIALS

Copper	} Connection		\$	
Lead				
Curb	} Cock	} 6 in.	\$	
				} Valve
1 Service box	} { Short 3 1/2 x 4 1/2	} _____	\$	
Old returned				} { Long 4 1/2 x 5 1/2
? Ft. 6" in.	} { Copper	} Pipe at	\$	
				} { C. I.
Nipples	in. at		\$	
Bushings	to in. at		\$	
Red'g	} Coupl'gs	} to in. at	\$	
Inc'g				
Union	in. at		\$	
Meter	in. at		\$	
Lead Joints	at		\$	
Compound Joints	at		\$	
Maintenance Foreman			\$	
Hrs. Water Maint. Man-1	at		\$	
Hrs. Water Maint. Man-2	at		\$	
Hrs. Garage Foreman	at		\$	
Hrs. Labor	at		\$	
Hrs. Compressor	at		\$	
Compensation Ins. at \$	per C		\$	
Trucking			\$	
Pav't Patch			\$	
Tap by Laramie & Co			\$	
			\$	
			\$	
O'head			\$	
			\$	

St. Park  
Pl. 100  
Ave. No. 100

Name of Owner G. E. Hospital

Labor and Mat'l. Report July 20 1967

North Wing  
of Hospital

● Curb Box

6" Main Park St. Elev. of Main at tap 5'

Gate at ● Gate at ●

● Curb Box  
New 6" Tap 7-20-67

LSM-5C-3-10-61

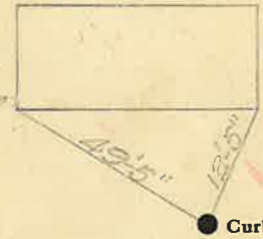
- 1941

St. ~~Pl.~~ Ave. No. Park 76

Name of Owner Glens Falls Hospital

Labor and Mat'l. Report Dec 18 1940

Park St.



BLD.  
RAZED  
1995

6" Main Tap on Park Place Elev. of Main at tap 4 1/2

Gate at ● Gate at ●

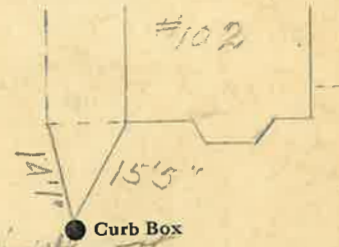
● Curb Box

St. ~~Pl.~~ Ave. No. Park St. 102

Name of Owner Glens Falls Hospital

Labor and Mat'l. Report June 5 1959

Shot OR  
At Curb  
2-28-1973



Bazinet St.

6" Main Elev. of Main at tap 5'

Gate at ● Gate at ●

● Curb Box

This Tap on  
Bazinet St.  
Tap made before  
Paving

LSM-5C-6-1-45



