

LABOR AND MATERIALS

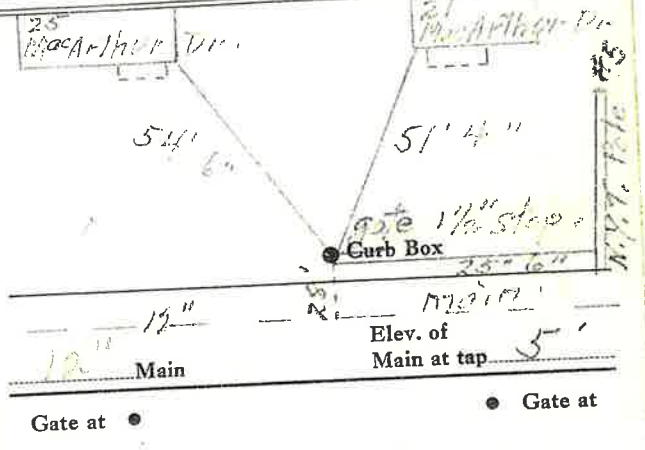
1	Copper	} Connection	1 1/2"	\$	
	Lead				
1	Curb	} Cock Valve T.S. & V.	1 1/2 in. Copper to Copper	\$	
1	Service box		} Short 3 1/2 x 4 1/2 Long 4 1/2 x 5 1/2		
27	Old returned			Buff or Rdway	\$
28	Ft. 1 1/2 in.	} Copper G.I. G.I.	Pipe at	\$	
	Nipples		in. at	\$	
	Bushings		to in. at	\$	
	Red'g	} Coupl'gs	to in. at	\$	
	Inc'g				
	Union	in. at	\$		
	Meter	in. at	\$		
	Lead Joints	at	\$		
	Compound Joints	at	\$		
	Maintenance Foreman		\$		
	Hrs. Water Maint. Man-1	at	\$		
	Hrs. Water Maint. Man-2	at	\$		
	Hrs. Garage Foreman	at	\$		
	Hrs. Labor	at	\$		
	Hrs. Compressor	at	\$		
	Compensation Ins. at \$	per C	\$		
	Trucking		\$		
	Pav't Patch		\$		
	Tap by Gifford, Miller & Co.		\$		
		3- -64.	\$		
	O'head		\$		

Shut off for
1 1/2" main on
Patton

Dr.
St.
Pl.
Ave. No.

Name of Owner

Labor and Mat'l. Report *March* 19*64*.



This Tap on
MacArthur Dr.
on 12" main.
North ↑
● Curb Box

LSM-SC-3-10-61
TAP EAST OF 12" GATE