

Labor and Materials

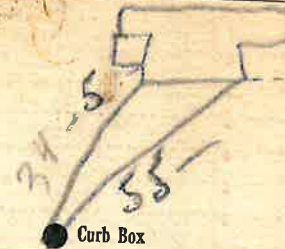
Copper	Connection.....	?	\$ 1.50
Lead			
Curb	{ Cock Valve }	in	\$.170
	{ T.S.&V. }		
Service Box	{ Short 3 1/2 x 4 1/2 }		\$ 1.44
Old returned	{ Long 4 1/2 x 6 1/2 }		
	{ Bull. or Rdway }		
26 Ft.	{ Copper Galv. Iron Cast Iron } Pipe at		\$ 1.94
Nipples	in. at		\$
Bushings	to	in. at	\$
Red'g Inc'g	{ Couplings }	to	in. at
Union	in. at		\$
Meter	in. at		\$
Lbs. Br. Stone	at		\$
Lbs. Sand	at		\$
Bags Cement	at		\$
Paving Brick	{ Mack Red Asphalt } at		\$
Lead Joints	at		\$
Leadite Joints	at		\$
5 Hrs.	Foreman at	6 1/2	\$ 3.12
3 Hrs.	Common Labor at	50	\$ 1.50
11 Hrs.	Common Labor at	45	\$ 4.95
Hrs. Mason	at		\$
Hrs. Masons Helper	at		\$
Hrs. Compressor	at		\$
Compensation Ins		\$ 0.34
Trucking		\$ 2.-
Builders Use of Water	Part Patch		\$ 5.-
Total			\$ 26.50

26 34

Labor and Material Report

19 30

17 Pine Street



6 Main

Elev. of Main at tap

Gate at ●

● Gate at

● Curb Box

Old Tap disconnected
Barn Tap.

4/16

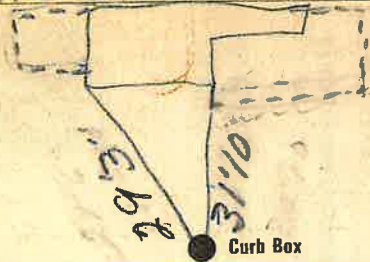
Labor and Materials

Copper } Connection..... 1".....	\$ 3.81
Curb } Cock } 1" in.....	\$ 3.59
} Gate } T. S. & V. }	
Service Box } Short 3/4 x 1/4 }.....	\$ 1.38
Old returned } Long 1/2 x 3/4 } } Butt. or Redway }	
2.4 Ft. 1" in. } Copper } Pipe at.....	\$ 5.28
} Galv. Iron }	
} Cast Iron }	
Nipples..... in. at.....	\$
Bushings..... to..... in. at.....	\$
Red'g } Couplings..... to..... in. at.....	\$
Inc'g }	
Union..... in. at.....	\$
Meter..... in. at.....	\$
Lbs. Br. Stone at.....	\$
Lbs. Sand at.....	\$
Bags Cement 'at.....	\$
Paving Brick } Mack } at.....	\$
} Red }	
} Asphalt }	
Lead Joints at.....	\$
Leadite Joints at.....	\$
5 Hrs. Foreman at.....	\$ 3.18
70 Hrs. Common Labor at.....	\$ 9.00
Hrs. Common Labor at.....	\$
Hrs. Mason at.....	\$
Hrs. Mason's Helper at.....	\$
Hrs. Compressor at.....	\$
Compensation Ins.....	\$ 37
Trucking.....	\$ 1
Builders' Use of Water } Patches.....	\$ 10.00
Total \$ 37.56	

Labor and Material Report

Sept 16 1931

17 Pine St



6 Main Elev of Main at tap 5

Gate at ● ● Gate at

● Curb Box

old Tap to be shut off

LABOR AND MATERIALS

Copper	}	Connection.....		\$
Lead				
Curb	{	Cock Valve T. S. & V. in.	\$
Service Box Old returned			}	Short 3¼x4¼
	Long 4½x5½			
	Buff or Rdway			\$
Ft. in.	}	Copper Galv Iron Cast Iron	Pipe at.....	\$
Nipples..... in. at				\$
Bushings..... to..... in. at				\$
Red'g Inc'g	}	Couplings..... to..... in. at		\$
Union..... in. at			\$	
Meter..... in. at				\$
Lead Joints at				\$
Leadite Joints at				\$
Hrs. Foreman at				\$
Hrs. Chauffeur at				\$
Hrs. Tapper at				\$
Hrs. Labor at				\$
Hrs. Labor at				\$
Hrs. Compressor at				\$
Compensation Ins.				\$
Trucking				\$
Builders Use of Water				\$
				\$
				\$
				\$
				\$
				\$

Pine

Name of Owner
Coles

Labor and Mat'l. Report 19

St.
Pl.
Ave. No. *17*

..... Main Elev. of
Main at tap.....

Gate at ● ● Gate at

● Curb Box

*This Curb Box shut off hose
connection at 17 Pine St*