

LABOR AND MATERIALS

1	Copper Lead	} Connection	3/4		\$ 1.35
1	Curb Valve (T.S. & V.)	} in.	3/4		\$ 1.80
1	Service Box Old returned	{ Short 3 1/2 x 4 1/2 Long 4 1/2 x 5 1/2 Buff for Rdway			\$ 1.70
7	Ft. 3/4 in.	{ Copper Galv Iron Cast Iron		Pipe at 18	\$ 1.26
	Nipples	in. at			\$
	Bushings	to in. at			\$
	Red'g Inc'g	Couplings to in. at			\$
	Union	in. at			\$
	Meter	in. at			\$
	Lead Joints	at			\$
	Leadite Joints	at			\$
	Hrs. Foreman	at			\$
1	Hrs. Chauffeur	at	6 1/2		\$ 67
3	Hrs. Tapper	at			\$ 1.88
4	Hrs. Labor	at	45		\$ 1.80
	Hrs. Labor	at			\$
3/4	Hrs. Compressor	at			\$ 46
	Compensation Ins.				\$ 14
	Trucking				\$ 1.00
	Builders Use of Water				\$
	Tap by Penor.				\$
					\$
					\$
					\$
					\$
					\$
					\$ 12.01

98 1941

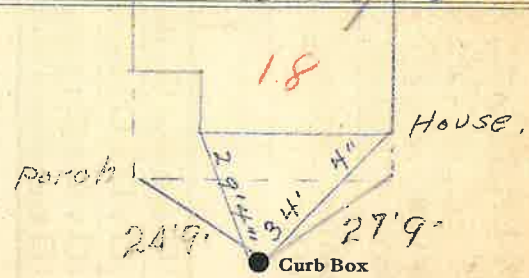
St. 18
Pl. Platt
Ave. No. 14

Name of Owner

Balstroz

Labor and Mat'l. Report

July 15 1941



4 Main Elev. of Main at tap 5 1/2
Gate at ● Gate at ●

TAX ID # 303.18-12-5

● Curb Box

Note - Backward curb box -
On is off + Off is On