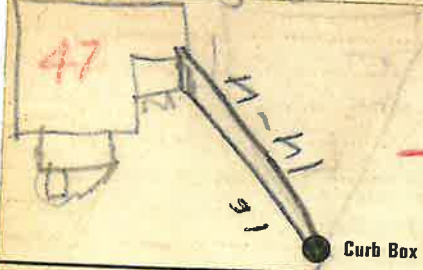


**Labor and Materials**

1	Copper	Connection	$\frac{3}{4}$ in.	\$ 3.20
1	Curb	Cock Valve T. S. & V.	$\frac{3}{4}$ in.	\$ 1.00
1	Service Box	Short 3 1/2 x 4 1/2 Long 4 x 6 Buff or Redway		\$ 1.30
27	Ft.	Copper Galvanized Cast Iron	$\frac{3}{4}$ in. Pipe at	\$ 5.94
	Nipples		in. at	\$
	Bushings		to in. at	\$
	Red'g Inc'g	Couplings	to in. at	\$
	Union		in. at	\$
	Meter		in. at	\$
	Lbs. Br. Stone		at	\$
	Lbs. Sand		at	\$
	Bags Cement		at	\$
	Paving Brick	Mack Red Asphalt	at	\$
	Lead Joints		at	\$
	Leadite Joints		at	\$
4	Hrs. Foreman		at	\$ 2.50
51	Hrs. Common Labor		at	\$ 12.59
	Hrs. Common Labor		at	\$
	Hrs. Mason		at	\$
	Hrs. Mason's Helper		at	\$
	Hrs. Compressor		at	\$
	Compensation Ins.		at	\$ 40
1	Trucking		at	\$ 1.00
	Builders' Use of Water		at	\$
Total				\$ 27.93

27-112 47  
**Labor and Material Report** July 12 1927

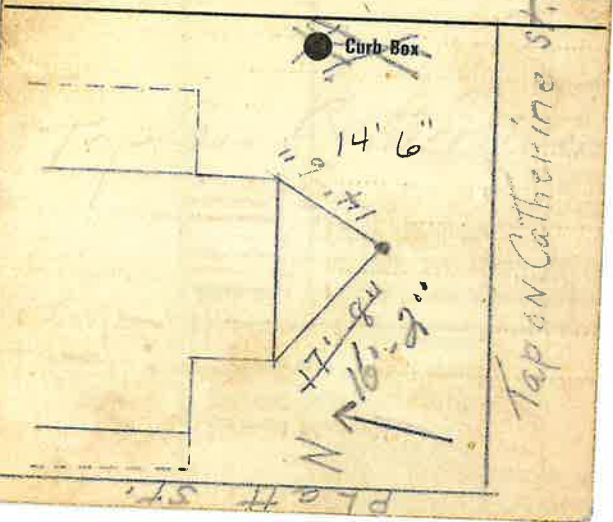
35 Platts St



see below

12" - 1969

Gate at ~~TAX~~ ID# 303.18-2-22 Gate at  
 Main Elev. of Main at tap 4 1/2



Tap on Catherine st.

PLATT ST.

