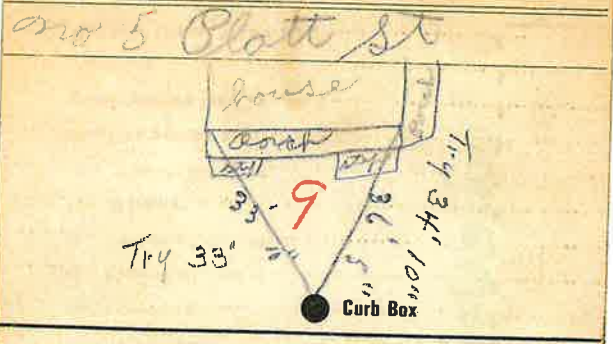


**Labor and Materials**

1	Copper } Connection 3/4	\$ 3.20
	Lead	
1	Curb } Cock Valve T.S. & V. } 3/4 in.	\$ 1.00
1	Service Box } Short 3 1/2 x 4 1/2 } Old returned } Long 4 1/2 x 5 1/2 } Buff. or Rdway }	\$ 1.40
29	9 Ft. 3/4 in. } Copper } Cast Iron } Pipe at	\$ 6.38
	Nipples..... in. at.....	\$
1	Bushings 3/4 to 1/2 in. at.....	\$ .08
1	Red'g } Couplings 1/2 to 1/2 in. at..... Inch }	\$ .15
	Union..... in. at.....	\$
	Meter..... in. at.....	\$
	Lbs. Br. Stone at.....	\$
	Lbs. Sand at.....	\$
	Bags Cement at.....	\$
	Paving Brick } Mack } Red } at..... Asphalt }	\$
	Lead Joints at.....	\$
	Leadite Joints at.....	\$
1	Hrs. Foreman at 6.25	\$ 2.50
6	Hrs. Common Labor at 50	\$ 3.00
36	Hrs. Common Labor at 105/8	\$ 4.63
	Hrs. Mason at.....	\$
	Hrs. Mason's Helper at.....	\$
	Hrs. Compressor at.....	\$
	Compensation Ins.....	\$ .54
	Trucking.....	\$ 1.00
	Builders' Use of Water.....	\$
Total \$		33.88

26-184 9  
 Labor and Material Report *no 8* 1926



4 Main Elev. of Main at tap 7'  
 Gate at ● Gate at ●

● Curb Box  
 TAX ID# 303.18-13.11