

LABOR AND MATERIALS

1	Copper Lead	} Connection	3/4	\$ 1.35
1	Curb	} Cock Valve F.S. & V.	3/4 in.	\$ 1.80
<i>Same</i>		Service Box Old returned	{ Short 3"x4" Long 4"x5" Buffer Rdway	\$ —
30	Ft.	3/4 in.	{ Copper Galv Iron Cast Iron	Pipe at 18 \$ 5.40
	Nipples	in. at		\$
	Bushings	to in. at		\$
	Red'g Inc'g	Couplings to in. at		\$
	Union	in. at		\$
	Meter	in. at		\$
	Lead Joints	at		\$
	Leadite Joints	at		\$
	Hrs. Foreman	at		\$
4	Hrs. Chauffeur	at	62 1/2	\$ 2.50
10 1/2	Hrs. Tapper	at	—	\$ 6.56
16	Hrs. Labor	at	45	\$ 7.20
	Hrs. Labor	at		\$
3/4	Hrs. Compressor	at	.62 1/2	\$.46
	Compensation Ins.			\$.50
	Trucking			\$ 1. —
	Builders Use of Water		<i>Byge Pump</i>	\$ —
	<i>Tap by Hassel</i>			\$ —
				\$ —
				\$ —
				\$ —
				\$ —
				\$ —
				\$ —
				\$ 26.77

45 1941

St. 55
Pr.
Ave. No. 43

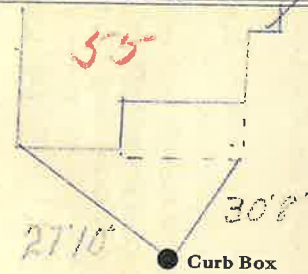
Platt

Name of Owner

Moyrihan

Labor and Mat'l. Report

July 2 1941



12" - 1967

Main

Elev. of
Main at tap. 6

Gate at ●

● Gate at

TAX ID # 303.18-2-18

● Curb Box