

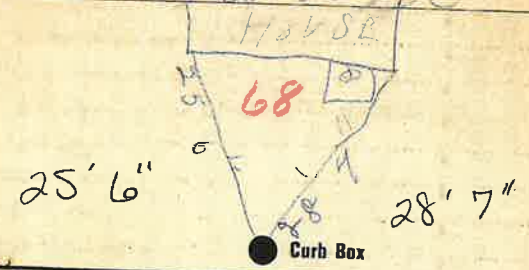
**Labor and Materials**

1	Copper } Connection	3/4		\$ 3.20
	Lead }			
1	Curb } Cock			\$ 1.00
	Valve }	3/4	in.	
	T.S. & V. }			
1	Service Box } Short 3 1/2 x 4 1/2			\$ 1.30
	Old returned } Long 4 1/2 x 5 1/2			
			Buff. or Rdway	
1.8	Ft. 3/4 in. } Copper			\$ 3.96
			Galv. Iron	
			Cast Iron	
	Nipples		in. at	\$
	Bushings		to in. at	\$
1	Red'g } Couplings	3/4	to 1/2 in. at	\$ 1.05
	Inc'g }			
	Union		in. at	\$
	Meter		in. at	\$
	Lbs. Br. Stone		at	\$
	Lbs. Sand		at	\$
	Bags Cement		at	\$
	Paving Brick } Mack		at	\$
			Red	
			Asphalt	
	Lead Joints		at	\$
	Leadite Joints		at	\$
7	Hrs. Foreman	42.5		\$ 4.37
33	Hrs. Common Labor	50		\$ 16.50
	Hrs. Common Labor		at	\$
	Hrs. Mason		at	\$
	Hrs. Mason's Helper		at	\$
	Hrs. Compressor		at	\$
	Compensation Ins.			\$ 55
	Trucking			\$ 1.00
	Builders' Use of Water			\$

Total \$ 320.3

76-112 68

no 52 Platt St.



Main Elev. of Main at tap 5'

Gate at Gate at

Curb Box

TAX ID# 303.18-1-4