

LABOR AND MATERIALS

1 Copper Lead	Connection	3/4"	\$ 2.71
1 Curb	Cock Valve T.S. & V.	3/4 in.	\$ 3.83
1 Service box	Short 3 1/2 x 4 1/2		
Old returned	Long 3 1/2 x 5 1/2		
	Tap or Return		\$ 4.69
10 Ft. 3/4 in.	Copper Pipe at	45	\$ 4.50
	G.I.		
	G.I.		
Nipples	in. at		\$
Bushings	to in. at		\$
Red'g Inc'g	Coupl'gs to in. at		\$
Union	in. at		\$
Meter	in. at		\$
Lead Joints at			\$
Compound Joints at			\$
Maintenance Foreman			\$
Hrs. Water Maint. Man-1 at			\$
5 1/2 Hrs. Water Maint. Man-2 at	1.24		\$ 6.82
Hrs. Garage Foreman at			\$
13 1/2 Hrs. Labor at	1.13		\$ 15.26
Hrs. Compressor at			\$
Compensation Ins. at \$	4.29 per C		\$.95
Trucking			\$ 1.50
Pav't Patch			\$
Tap by Gissord 12-2-55			\$ 14.40
			\$
			\$
O'head			\$
			\$ 54.66

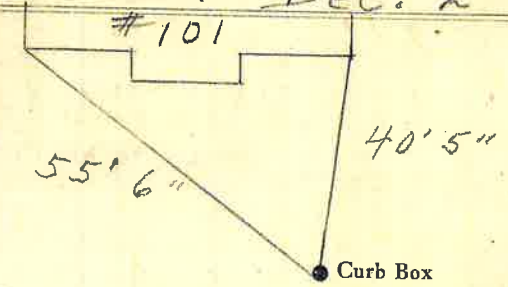
Patch ?
40.26

22.08

St. Platt
Pl.
Ave. No. 101

Name of Owner Cote

Labor and Mat'l. Report Dec. 2 1955



4" Main Elev. of Main at tap 4 1/2'

Gate at • Gate at •

TAX ID# 303.14-3-12

• Curb Box