

LABOR AND MATERIALS

| | | | |
|----|-----------------------------|---|----|
| 1 | Copper Lead | Brass Tee 1" x 3/4" Connection | \$ |
| 1 | Curb | Cook Valve T.S. & V. } 3/4 in. (MAY KIT or 1) | \$ |
| 1 | Service box Old returned | { Short 3 1/2 x 4 1/2 Long 4 1/2 x 5 1/2 Buff. or Rdway } | \$ |
| 10 | Ft. 3/4 in. | { Copper G. I. C. I. } Pipe at | \$ |
| | Nipples | in. at | \$ |
| | Bushings | to in. at | \$ |
| | Red'g Inc'g | Coupl'gs to in. at | \$ |
| | Union | in. at | \$ |
| | Meter | in. at | \$ |
| 2 | Lead Joints at | 1" Male Adapters | \$ |
| 1 | Compound Joints at | 3/4" Male Adapter | \$ |
| | Maintenance Foreman | | \$ |
| | Hrs. Water Maint. Man-1 | at | \$ |
| | Hrs. Water Maint. Man-2 | at | \$ |
| | Hrs. Garage Foreman | at | \$ |
| | Hrs. Labor | at | \$ |
| | Hrs. Compressor at | | \$ |
| | Compensation Ins. at \$ | per C | \$ |
| | Trucking | | \$ |
| | Pav't Patch | | \$ |
| | TAP MADE BY BOECHERT CO | | \$ |
| | Sept-19-1973 | | \$ |
| | O'head | | \$ |

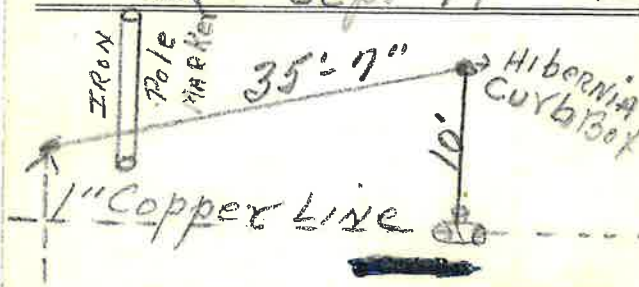
Three Willows Computer LAB 123
(KEN WITHING) 2021

Upper Platt St.
Pt. Ave. No. ?

Name of Owner

ANCIENT order of Hibernias

Labor and Mat'l Report Sept 19 1973



1" Copper Main Elev. of Main at tap 3 1/2"

Gate at • Gate at

• Curb Box

3/4" copper

10' to MAIN