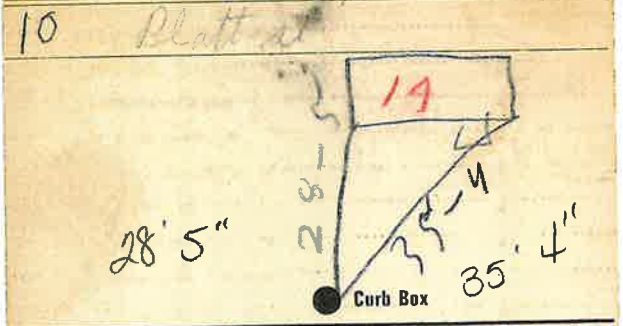


Labor and Materials

Copper } Connection.....	3	\$ 320
Curb } Cock	1	\$ 1.00
Value	1	
T. S. & V.	3/4	
Service Box } Short 3" x 4"	1	\$ 1.30
Old returned } Long 4" x 6"		
Buff or Railway		
8 Ft.....in. } Copper	3	\$ 1.76
Cast Iron		
Cast Iron } Pipe at.....	1	
Nipples.....in. at.....		\$
Bushings.....to.....in. at.....		\$
Red'g } Couplings.....to.....in. at.....		\$
Inc'g		
Union.....in. at.....		\$
Meter.....in. at.....		\$
Lbs. Br. Stone at.....		\$
Lbs. Sand at.....		\$
Bags Cement at.....		\$
Paving Brick } Mack	1	\$
Red		
Asphalt		
Lead Joints at.....		\$
Leadite Joints at.....		\$
4 Hrs. Foreman at.....		\$ 2.50
10 Hrs. Common Labor at.....		\$ 4.06
Hrs. Common Labor at.....		\$
Hrs. Mason at.....		\$
Hrs. Mason's Helper at.....		\$
Hrs. Compressor at.....		\$
Compensation Ins.....		\$ 1.17
1 Trucking.....		\$ 1.00
Builders' Use of Water.....		\$
Total		\$ 14.99

7-148 14
 Labor and Material Report left 7 19 27



4 Main Elev. of Main at tap 5 1/2
 Gate at ● Gate at ●

● Curb Box
 Old tap shut off
 TAX ID# 303.18-12-3