

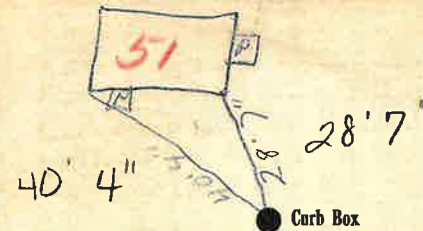
#83.

Labor and Materials

1	Copper	} Connection. $3\frac{1}{2}$ "	\$ 1.48
1	Lead			
1	Curb	} Cock Valve F.S.&V. $3\frac{1}{2}$ " in	\$ 1.79
1	Service Box			
	Old returned	} Short $3\frac{1}{2} \times 4\frac{1}{2}$ Long $4\frac{1}{2} \times 5\frac{1}{2}$ Buff. or Riser	\$ 1.30
29	Ft. $3\frac{1}{2}$ " in			
	Copper Galv. Iron Cast Iron	} Pipe at	\$ 5.27
	Nipples			
	Bushings to in. at	\$
1	Redg Incg	} Couplings. $3\frac{1}{2}$ " to $4\frac{1}{2}$ " in. at	\$ 1.0
	Union			
	Meter in. at	\$
	Lbs. Br. Stone	at	\$
	Lbs. Sand	at	\$
	Bags Cement	at	\$
	Paving Brick	} Mack Red Asphalt	at	\$
	Lead Joints			
	Leadite Joints	at	\$
19	Hrs. Foreman	at	\$ 11.88
8	Hrs. Common Labor	at	\$ 3.60
	Hrs. Common Labor	at	\$
	Hrs. Mason	at	\$
	Hrs. Masons Helper	at	\$
	Hrs. Compressor	at	\$
	Compensation Ins	\$ 47
	Trucking	\$ 1.00
	Builders Use of Water	Patch	\$ 5.00
Total				\$ 31.84

532-83 51 Labor and Material Report 1972

3/4 tap at 39' depth at



6" Main

Elev. of Main at tap 4.45

Gate at TAX ID # 303.17-6-15 Gate at

● Curb Box

Old tap not dug up.

Two Hours on same

Tap

3/4" copper
29' to MAIN

O.K. (initials)