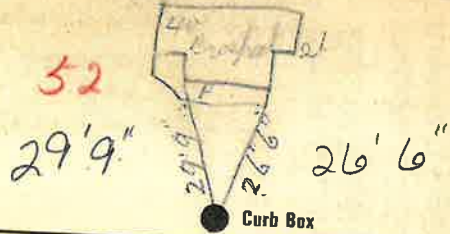


**Labor and Materials**

1	Copper	Connection	3/4"	\$	3.20
	Lead				
1	Curb	Cock Valve T.S. & V.	3/4" in.	\$	1.00
1	Service Box	Short	3 1/2 x 4 1/2	\$	1.30
	Old returned	Long	4 1/2 x 5 1/2		
		Buff. or Rdway			
10	Ft.	3/4" in.	Copper Galv. Iron Cast Iron	Pipe at	\$ 2.20
	Nipples			in. at	\$
1	Bushings	3/4" to 1/2"		in. at	\$ .07
	Red'g Inc'g	Couplings		to in. at	\$
	Union			in. at	\$
	Meter			in. at	\$
	Lbs. Br. Stone	at			\$
	Lbs. Sand	at			\$
	Bags Cement	'at			\$
	Paving Brick	Mack Red Asphalt		'at	\$
	Lead Joints	at			\$
	Leadite Joints	at			\$
1	Hrs. Foreman	at			\$ 1.63
2	Hrs. Common Labor	at			\$ 1.00
2	Hrs. Common Labor	at			\$ 2.54
	Hrs. Mason	at			\$
	Hrs. Mason's Helper	at			\$
	Hrs. Compressor	at			\$
	Compensation Ins				\$ 12
	Trucking				\$ 100
	Builders' Use of Water				\$
				Total	\$ 13.36

28-114 32  
 Labor and Material Report Sept 7 1928

40 Prospect



Main Eley of Main at tap 4ft  
 Gate at ● Gate at ●

● Curb Box

Old tap shut off

TAX ID# 303.17-5-3

3/4" copper  
 10' to MAIN