

LABOR AND MATERIALS

1	Copper Lead	Connection	$\frac{3}{4}$ "	\$	2.71
1	Curb	Cock Valve T.S. & V.	$\frac{3}{4}$ in.	\$	3.83
1	Service box Old returned	{ Short $3\frac{1}{2}$ x $4\frac{1}{2}$ Long $4\frac{1}{2}$ x $5\frac{1}{2}$ Buff or Rdway }		\$	4.69
38	$\frac{3}{4}$ in.	{ Copper G.I. G.I. }	Pipe at	45	\$ 17.10
	Nipples	in. at		\$	
	Bushings	to in. at		\$	
	Red'g Inc'g	Coupl'gs	to in. at	\$	
	Union	in. at		\$	
	Meter	in. at		\$	
	Lead Joints at			\$	
	Compound Joints at			\$	
	Maintenance Foreman			\$	
	Hrs. Water Maint. Man-1 at			\$	
25	Hrs. Water Maint. Man-2 at	1.24		\$	31.00
	Hrs. Garage Foreman at			\$	
65	Hrs. Labor	at	1.13	\$	73.45
	Hrs. Compressor at			\$	
	Compensation Ins. at \$	4.29	per C.	\$	4.48
	Trucking			\$	1.50
	Pav't Patch			\$	33.74
	Tap by Gifford 11-29-55			\$	
	O'head			\$	
				\$	172.50

13876

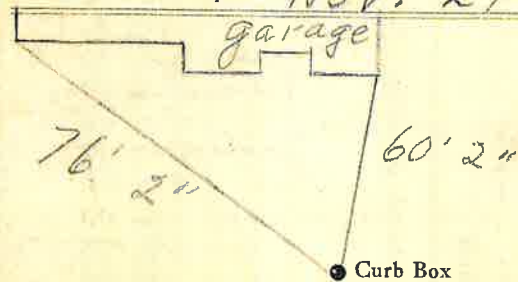
St.  
Pl.  
Ave. No. 37

Quade

Name of Owner

Nason.

Labor and Mat'l. Report Nov. 29 1955



6" Main

Elev. of  
Main at tap 4 1/2'

Gate at •

• Gate at

TAX ID # 302.19-15.25

• Curb Box

$\frac{3}{4}$ " Copper  
34' for MAIN

125