

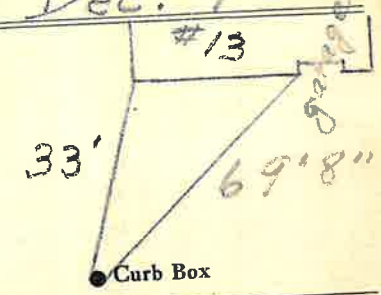
LABOR AND MATERIALS

1	Copper	Connection	3/4	\$
1	Curb	Cock Valve	3/4 in.	\$
1	Service box	Short 3 1/2 x 4 1/2		
	Old returned	Long 4 1/2 x 5 1/2		
		Buff or Rdway		\$
28	Ft. 3/4 in.	Copper	Pipe at	\$
		G.I.		
		G.I.		
	Nipples	in. at		\$
	Bushings	to in. at		\$
	Red'g	Coupl'gs	to in. at	\$
	Inc'g			
	Union	in. at		\$
	Meter	in. at		\$
	Lead Joints	at		\$
	Compound Joints	at		\$
	Maintenance Foreman			\$
	Hrs. Water Maint. Man-1	at		\$
	Hrs. Water Maint. Man-2	at		\$
	Hrs. Garage Foreman	at		\$
	Hrs. Labor	at		\$
	Hrs. Compressor	at		\$
	Compensation Ins.	at \$ per C		\$
	Trucking			\$
	Pav't Patch			\$
	Tap by Gifford & Co.			\$
				\$
				\$
	O'head			\$

St. Dr.
 Ave. No. 13

Reservoir
 Name of Owner
 Colony Homes

Labor and Mat'l. Report Dec. 9 1957



Transite
 6 Main Elev. of Main at tap 5 1/2'

Gate at • Gate at •
 TAX ID# 302.17-4-7

• Curb Box

Water Main in the middle of the Road