

Labor and Materials

1	Copper	Connection	3/4	\$ 2.60
	Lead			
1	Curb	Cock Valve T-S & Y	3/4 in.	\$ 2.77
1	Service Box	Short 3/4 x 1/2		\$ 1.59
	Old returned	Long 4/8 x 5/8		
		Buff. or Rdway		
30	Ft.	3/4 in.	Copper Galv. Iron Cast Iron Pipe at	\$ 5.40
	Nipples	in. at		\$
	Bushings	to in. at		\$
	Red'g Inc'g	Couplings to in. at		\$
	Union	in. at		\$
	Meter	in. at		\$
	Lbs. Br. Stone	at		\$
	Lbs. Sand	at		\$
	Bags Cement	at		\$
	Paving Brick	Mack Red Asphalt at		\$
	Lead Joints	at		\$
	Leadite Joints	at		\$
1.0	Hrs. Foreman	at		\$ 6.25
6	Hrs. Common Labor	at Tapper		\$ 9.00
2.5	Hrs. Common Labor	at		\$ 11.25
	Hrs. Mason	at		\$
	Hrs. Mason's Helper	at		\$
3	Hrs. Compressor	at		\$ 4.50
	Compensation Ins			\$ .63
	Trucking			\$ 1.00
	Builders' Use of Water	Patch		\$ 23.00
Total \$				61.49

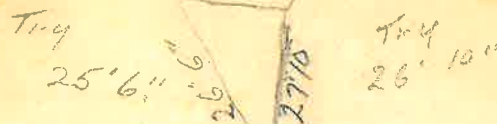
31-183 234

Labor and Material Report

19 21

31-183 234

234



Gate at Main Elev of Main at tap  
 Gate at TAX ID # 302.12-27-6

Curb Box

3/4" - 30' COPPER