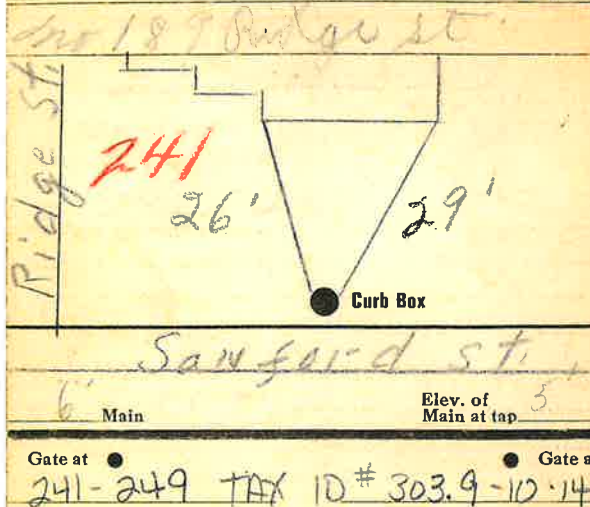


### Labor and Materials

Copper } Connection J/		\$ 320
Lead } Connection J/		
Curb } Cock	} 2 1/2 in.	\$ 1.00
Valve		
T.S. & V.		
Service Box } Short 3/4 x 4 1/2	} Old returned	\$ 1.40
Long 3/4 x 5 1/2		
Bull. or Rdway		
14 Ft. 3/4 in. } Copper	} Pipe at	\$ 374
Galv. Iron		
Cast Iron		
Nipples.....in. at		\$
Bushings.....to.....in. at		\$
Red'g } Couplings.....to.....in. at		\$
Inc'g }		
Union.....in. at		\$
Meter.....in. at		\$
Lbs. Br. Stone at		\$
Lbs. Sand at		\$
Bags Cement at		\$
Paving Brick } Mack	} at	\$
Red		
Asphalt		
Lead Joints at		\$
Leadite Joints at		\$
3 Hrs. Foreman at	6.25	\$ 1.87
8 Hrs. Common Labor at	5.0	\$ 4.00
10 Hrs. Common Labor at	4.05	\$ 4.05
Hrs. Mason at		\$
Hrs. Mason's Helper at		\$
Hrs. Compressor at		\$
Compensation Ins.		\$ 26
Trucking		\$ 1.00
Builders' Use of Water		\$
Total		\$ 21.53

241  
Labor and Material Report

7/11/1917



● Curb Box

Tap ON Sanford ST.

3/4" - 14' COPPER