

LABOR AND MATERIALS

1 Copper Lead	Connection	3/4			\$ 1.31
1 Curb	Cock Valve T. S. & V.	3/4	in.		\$ 1.75
1 Service Box Old returned	Short 3 1/2 x 4 1/2 Long 4 1/2 x 5 1/2 Buff. or Rdway				\$ 1.60
32 Ft. 3/4 4	Copper Galv Iron Cast Iron		Pipe at	18	\$ 5.76
Nipples	in. at				\$
Bushings	to in. at				\$
Red'g Inc'g	Couplings	to in. at			\$
Union	in. at				\$
Meter	in. at				\$
Lead Joints	at				\$
Leadite Joints	at				\$
Hrs. Foreman	at				\$
2 Hrs. Chauffeur	at	.62 1/2			\$ 1.25
2 Hrs. Tapper	at				\$ 5-
8 Hrs. Labor	at	.45			\$ 3.60
Hrs. Labor	at				\$
Hrs. Compressor	at				\$
Compensation Ins.					\$.30
Trucking					\$ 1-
Builders Use of Water	1/2 Patch (sewer)				\$ 2.50
Taphythesial					\$
					\$
					\$
					\$
					\$
					\$ 24.07

117 - 1940

St. **312**
Pt. **298**
Ave. No. **298**

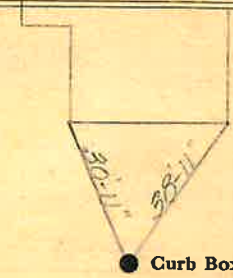
Bridge

Name of Owner

Moriarty

Labor and Mat'l. Report

Oct 11 1940



6

Elev. of
Main at tap **6**

Gate at ●

● Gate at

● Curb Box

3/4" - 32' COPPER