

LABOR AND MATERIALS

Copper } Connection		\$
Lead } Curb		\$
1 Curb } Gock Valve } T. S. & V. } 6 in.		\$
1 Service box } Short 3 1/2 x 4 1/2 } Old returned } Long 4 1/2 x 5 1/2 } Buff or Rdway }		\$
15 Ft. 6" } Copper } C.I. } C.I. }	Pipe at	\$
Nipples	in. at	\$
Bushings	to in. at	\$
Red'g } Inc'g }	Coupl'gs to in. at	\$
Union	in. at	\$
Meter	in. at	\$
Lead Joints at		\$
Compound Joints at		\$
Maintenance Foreman		\$
Hrs. Water Maint. Man-1 at		\$
Hrs. Water Maint. Man-2 at		\$
Hrs. Garage Foreman at		\$
Hrs. Labor at		\$
Hrs. Compressor at		\$
Compensation Ins. at \$	per C	\$
Trucking		\$
Pav't Patch		\$
Top by Kelly + Co		\$
Sept 12/1977		\$
O'head		\$

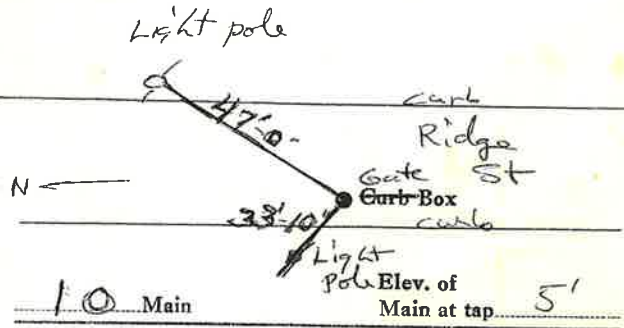
Ridge

St. 51
Pl
Ave. No.

Name of Owner

Glen Falls Housing Auth.

Labor and Mat'l. Report Sept 12 1977



Gate at • Gate at
#45. TAX ID# 303.17-16-3.2
HOUSING AUTH

6" CI
15' to MAIN
• Curb Box