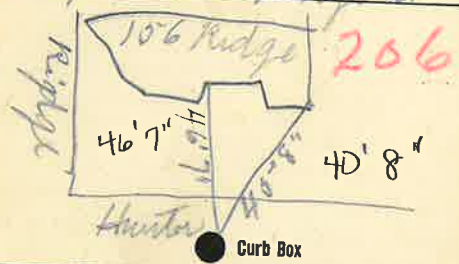


Labor and Material Report May 11 1923

1" tap at 156 Ridge St



6" Main

Elev. of Main at tap 14 1/2

Gate at ●

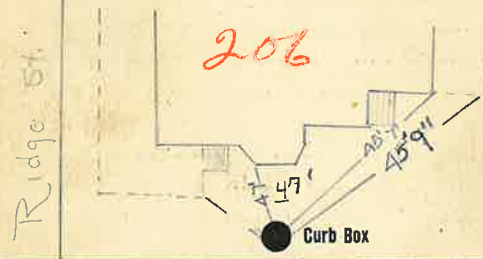
● Gate at

● Curb Box

Tap on Hunter ST

206 Labor and Material Report May 11 1923

1" tap at 156 Ridge St



6" Main

Elev. of Main at tap 4 1/2

Gate at ●

● Gate at

TAX ID# 302.16-16-4

● Curb Box

Tap on Hunter St.

### Labor and Materials

1	Lead Connection 1"	\$
1	Curb Cock <i>1 1/4 Valve</i>	\$
1	Service Box (Short 3 1/2 x 4 1/2) Old returned (Long 4 1/2 x 5 1/2) Buffalo	\$
	Ft. .... in. G. I. Pipe at	\$
1	Nipples <i>1 1/4</i> in. at	\$
	Bushings .... in. at	\$
1	Red'g Coup <i>1 1/4</i> to <i>1 1/2</i> in. at	\$
	Inc'g Coup .... to .... in. at	\$
	Union .... in. at	\$
	Meter .... in. at	\$
	Cu. Yds. Br. Stone at	\$
	Cu. Yds. Sand at	\$
	Bags Cement at	\$
	Pav. Brick { Mack Red Asphalt } at	\$
2	Hrs. Foreman at	\$
2	Hrs. Com. Labor at	\$
	Hrs. Mason at	\$
	Hrs. .... at	\$
	Hrs. .... at	\$
<i>200</i>	Builders' Use of Water	\$
	Truck <i>100</i> at	\$
	at	\$
	at	\$
	at	\$
	at	\$
	Total \$ <i>10.42</i>	

### Labor and Materials

1	Lead Connection 1"	\$
1	Curb Cock <i>1 1/4 Valve</i>	\$
1	Service Box (Short 3 1/2 x 4 1/2) Old returned (Long 4 1/2 x 5 1/2) Buffalo	\$
	Ft. .... in. G. I. Pipe at	\$
1	Nipples <i>1 1/4</i> in. at	\$
	Bushings .... in. at	\$
1	Red'g Coup <i>1 1/4</i> to <i>1 1/2</i> in. at	\$
	Inc'g Coup .... to .... in. at	\$
	Union .... in. at	\$
	Meter .... in. at	\$
	Cu. Yds. Br. Stone at	\$
	Cu. Yds. Sand at	\$
	Bags Cement at	\$
	Pav. Brick { Mack Red Asphalt } at	\$
2	Hrs. Foreman at	\$
2	Hrs. Com. Labor at	\$
	Hrs. Mason at	\$
	Hrs. .... at	\$
	Hrs. .... at	\$
	No Builders' Use of Water	\$
	Truck <i>100</i> at	\$
	at	\$
	at	\$
	at	\$
	at	\$
	Total \$ <i>10.42</i>	