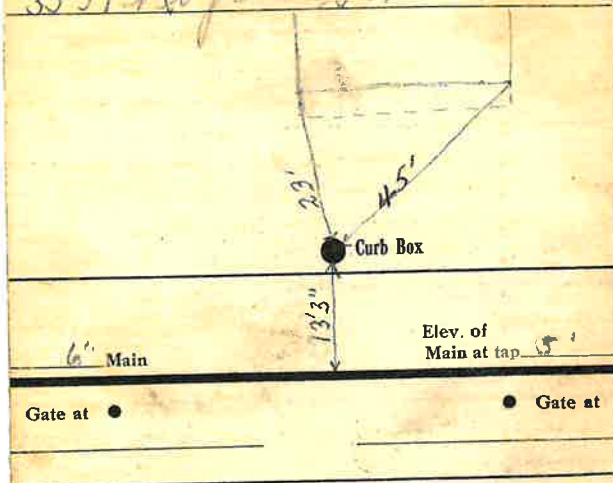


Labor and Materials

1	Copper	} Connection.....	\$ 1.50
1	Lead		
1	Curb	} Cock Valve T.S.&V.in	\$ 1.70
1	Service Box Old returned		} Short 3 1/2 x 4 1/2 Long 4 1/2 x 5 1/2 Buff. or Rdwgs
14	Ft.....	} Copper Galv. Iron Cast Iron	
	Nipples	in. at
	Bushingstoin. at	\$
	Red'g Inc'g	} Couplings.....to.....in.at	\$
	Union.....		
	Meter.....in. at	\$
	Lbs. Br. Stone	at	\$
	Lbs. Sand	at	\$
	Bags Cement	at	\$
	Paving Brick	} Mack Red Asphalt	} at \$
	Lead Joints		
	Leadite Joints	at	\$
2	Hrs. Foreman	at 67 1/2	\$ 12.50
7	Hrs. Common Labor	at 45	\$ 31.50
	Hrs. Common Labor	at	\$
	Hrs. Mason	at	\$
	Hrs. Masons Helper	at	\$
2	Hrs. Compressor	at	\$ 3.-
	Compensation Ins		\$ 9.16
	Trucking		\$
	Builders Use of Water		\$
Total			\$ 149.60

35-37 *Rogers St.*



Gate at ● Curb Box

Mike Scarsilletta

#37 - TAX 10#
303.18-8-4

MS