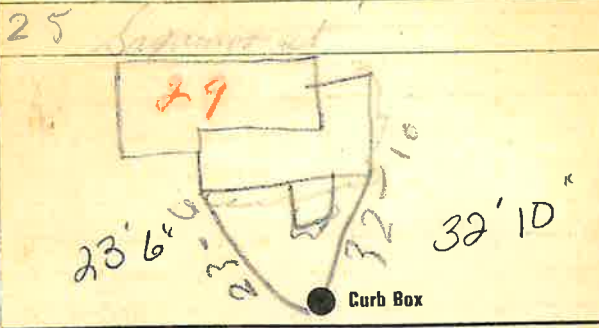


Labor and Materials

1	Copper	Connection	3/4	\$ 3.20
1	Curb	Cock Valve	3/4 in.	\$ 1.00
1	Service Box	Short 3/4 x 4		\$ 1.30
	Old returned	Long 4 x 5		
		Buff. or Railway		
9	Ft.	Copper Galv. Iron	3/4 Pipe at	\$ 1.98
	Nipples	Cast Iron		\$
	Bushings			\$
	Red'g Inc'g	Couplings		\$
	Union			\$
	Meter			\$
	Lbs. Br. Stone			\$
	Lbs. Sand			\$
	Bags Cement			\$
	Paving Brick	Mack Red Asphalt		\$
	Lead Joints			\$
	Leadite Joints			\$
2	Hrs. Foreman			\$ 1.25
	Hrs. Common Labor			\$
	Hrs. Mason			\$
	Hrs. Mason's Helper			\$
	Hrs. Compressor			\$
	Compensation Ins.			\$ 1.03
1	Trucking			\$ 1.00
	Builders' Use of Water			\$
Total \$				9.76

27-133 SAGAMORE ST. 29
 Labor and Material Report Aug 7 1927



6 Main Elev. of Main at tap 4
 Gate at TAX ID # 303.13-3-17 Gate at

● Curb Box
 Old tap to be dug up
 9' to MAIN
 3/4" COPPER