

LABOR AND MATERIALS

1	Copper	{ Connection	3/4"	\$	2.76
1	Lead	{			
1	Curb	{ Cock Valve	3/4 in.	\$	3.49
		{ T.S. & V. }			
1	Service box	{ Short 3 1/2 x 4 1/2		\$	4.74
	Old returned	{ Long 4 1/2 x 5 1/2			
		{ Buff-or-Rdway }			
9	Ft. 3/4" in.	{ Copper	Pipe at 35	\$	3.15
		{ G.I.			
		{ C.I.			
	Nipples	in. at		\$	
	Bushings	to in. at		\$	
	Red'g	{ Coupl'gs	to in. at	\$	
	Inc'g	{			
	Union	in. at		\$	
	Meter	in. at		\$	
	Lead Joints at			\$	
	Compound Joints at			\$	
	Hrs. Water Maint. Man-1 at			\$	
5	Hrs. Water Maint. Man-2 at	1.13		\$	5.65
15	Hrs. Labor	at 1.02		\$	15.30
	Hrs. Labor	at		\$	
3	Hrs. Compressor at	1.50		\$	4.50
	Compensation Ins. at	3.706 per C.		\$	7.8
	Trucking			\$	1.00
	Pav't Patch			\$	9.45
				\$	
				\$	
	O'head			\$	
				\$	50.82

Top made by
Gifford Feb 6-1952

St. PL
Ave. No. 49

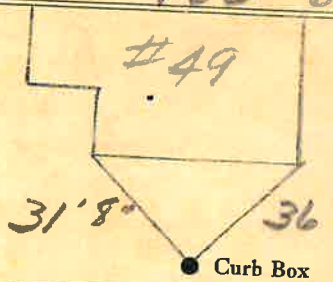
Name of Owner

Marrill

Labor and Mat'l. Report

Feb 6

1952



6" Main

Elev. of

Main at tap

5"

Gate at ●

● Gate at

TAX ID # 303.13-3-9

● Curb Box

9' to main

3/4 copper