

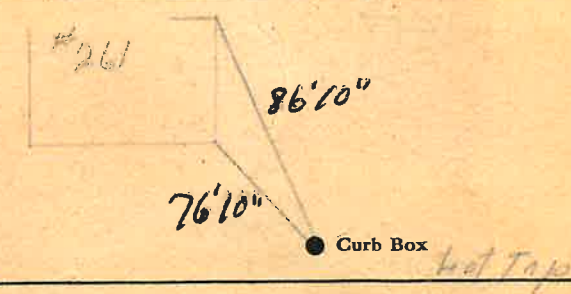
LABOR AND MATERIALS

1	Copper Lead	Connection	3/4	\$ 96
1	Curb	Cock Valve T. S. & V.	3/4 in.	\$ 133
1	Service Box Old returned	Short 3/2x4 1/2 Long 4 1/2x5 1/2 Buff. or Rdway		\$ 135
22	Ft.	3/4 in. Copper Galv. Iron Cast Iron	Pipe at 15	\$ 330
	Nipples	in. at		\$
	Bushings	to in. at		\$
	Red'g Inc'g	Couplings to in. at		\$
	Union	in. at		\$
	Meter	in. at		\$
	Lead Joints	at		\$
	Leadite Joints	at		\$
	Hrs. Foreman	at		\$
4	Hrs. Chauffeur	at	1.62 1/2	\$ 2.50
	Hrs. Tapper	at		\$
17	Hrs. Labor	at	45	\$ 7.65
	Hrs. Labor	at		\$
	Hrs. Compressor	at		\$
	Compensation Ins.			\$ 31
	Trucking			\$ 1.50
	Builders Use of Water	Patch		\$ 5.-
	Taply Man or			\$
	This is a hot tap			\$
	Measured from P. 61 Sanford			\$
				\$

St. Sanford
 Pr. 249
 Ave. No. 257

Name of Owner Hart

Labor and Mat'l. Report July 16 1936



6 Main Elev. of Main at tap 5
 Gate at ● Gate at ●

TAX ID # 303.10-2-1

● Curb Box
22' to MAIN
3/4" copper