

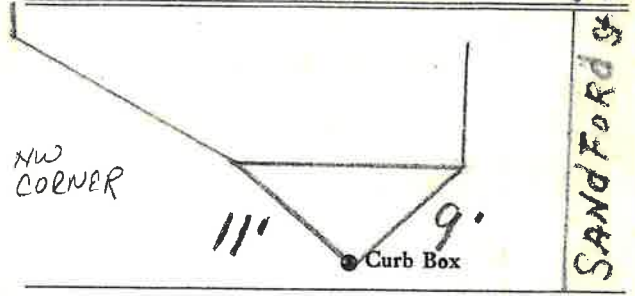
LABOR AND MATERIALS

1 Copper } Connection 3/4" \$
 1 Curb } Cock } 3/4 in. MARK II \$
 } Valve } ORISEAL
 } T.S. & V. }
 1 Service box } Short 3 1/2 x 4 1/2 } ORISEAL
 Old returned } Long 4 1/2 x 5 1/2 } CAP
 } ORISEAL
 } ORISEAL
 11 1/2 Ft. 3/4 in. } Copper } Pipe at \$
 } ORISEAL
 Nipples in. at \$
 Bushings to in. at \$
 Red'g }
 Inc'g } Coupl'gs to in. at \$
 Union in. at \$
 Meter in. at \$
 Lead Joints at \$
 Compound Joints at \$
 Maintenance Foreman \$
 Hrs. Water Maint. Man-1 at \$
 Hrs. Water Maint. Man-2 at \$
 Hrs. Garage Foreman at \$
 Hrs. Labor at \$
 Hrs. Compressor at \$
 Compensation Ins. at \$ per C \$
 Trucking \$
 Pav't Patch \$
TAP MADE BY LARCA \$
4 Co JAN 5 - 1972 \$
 O'head \$

St. SANFORD
 No. 24

Name of Owner
ANTHONY PICHEO

Labor and Mat'l. Report JAN 5 1972



LOGAN AVE
 6" Main Elev. of Main at tap 3 1/2

Gate at • Gate at

TAX ID# 302.16.4.27

● Curb Box
TAP ON LOGAN AVE

11 1/2' to MAIN
3/4" COPPER