

**Labor and Materials**

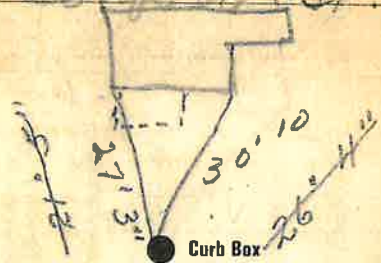
1	Copper	Connection	Copper	\$	2.70
1	Curb	Cock	3/4 in.	\$	2.39
1	Service Box	Old returned	Long 4 1/2 x 5 1/2	\$	1.55
9	Ft.	Copper	Pipe at	\$	2.43
		Nipples	in. at	\$	
1	Bushings	to	in. at	\$	.10
	Red'g	Couplings	to	in. at	\$
	Inc'g			\$	
	Union	in. at		\$	
	Meter	in. at		\$	
	Lbs. Br. Stone	at		\$	
	Lbs. Sand	at		\$	
	Bags Cement	at		\$	
	Paving Brick	Mack	at	\$	
		Red		\$	
		Asphalt		\$	
	Lead Joints	at		\$	
	Leadite Joints	at		\$	
4	Hrs. Foreman	at		\$	2.50
1.2	Hrs. Common Labor	at		\$	5.40
	Hrs. Common Labor	at		\$	
	Hrs. Mason	at		\$	
	Hrs. Mason's Helper	at		\$	
1	Hrs. Compressor	at		\$	1.50
	Compensation Ins.			\$	.24
	Trucking			\$	1.00
	Builders' Use of Water	Patch		\$	5.00
				Total \$	24.91

30-12

Labor and Material Report

1930

104  
72 Sanford St.



6 in Main

Elev of Main at tap 6"

Gate at TAX ID # 302.12-23-1 Gate at

● Curb Box

9' to MAIN  
3/4" COPPER  
all tap  
disconnected