

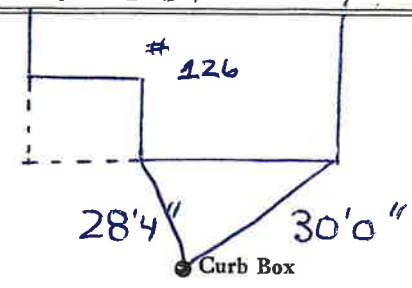
LABOR AND MATERIALS

1	Copper	} Connection	3/4	\$
	Lead			
1	Curb	} Cock Valve T.S. & V.	3/4 in.	\$
1	Service box	} Short 3 1/2 x 4 1/2 Long 4 1/2 x 5 1/2 Buff or Rdway		\$
	Old returned			
10	Ft. 3/4 in.	} Copper G. I. C. I.	} Pipe at	\$
	Nipples	in. at	\$	
	Bushings	to in. at	\$	
	Red'g } Inc'g }	Coupl'gs to in. at	\$	
	Union	in. at	\$	
	Meter	in. at	\$	
	Lead Joints at		\$	
	Compound Joints at		\$	
	Maintenance Foreman		\$	
	Hrs. Water Maint. Man-1 at		\$	
	Hrs. Water Maint. Man-2 at		\$	
	Hrs. Garage Foreman at		\$	
	Hrs. Labor at		\$	
	Hrs. Compressor at		\$	
	Compensation Ins. at \$	per C	\$	
	Trucking		\$	
	Pav't Patch		\$	
			\$	
			\$	
	O'head		\$	
			\$	

SANFORD St. Pt. Ave. No. 126

Name of Owner
R. L. Davidson

Labor and Mat'l. Report Oct 26, 1945



6" Main Elev. of Main at tap 5 1/2"

Gate at • Gate at

TAX ID # 302.12-13-4

• Curb Box

Re-measured 4/14/80
R. Lynch
10' to MAIN
3/4 COPPER