

LABOR AND MATERIALS

1	Copper	Connection	3/4		\$ 2.27
	Lead				
	Curb	Cock Valve	3/4 in.		\$ 2.70
		F.S. & V.			
	Service box	Short 3 1/2 x 4 1/2			\$ 4.25
	Old returned	Long 4 1/2 x 5 1/2			
		Buff or Rdway			
22	155	Ft. 3/4 in.		Pipe at 35	\$ 9.75
	Nipples	in. at			\$
	Bushings	to in. at			\$
	Red'g Inc'g	Coupl'gs to in. at			\$
	Union	in. at			\$
	Meter	in. at			\$
	Lead Joints at				\$
	Compound Joints at				\$
	Hrs. Water Maint. Man	1 at			\$
7		Hrs. Water Maint. Man	2 at 1.02		\$ 7.14
16		Hrs. Labor	at 91		\$ 14.56
		Hrs. Labor	at		\$
3		Hrs. Compressor at	1.20		\$ 3.60
	Compensation Ins. at	\$ 22.26 per C.			\$ 48
	Trucking				\$ 1.00
	Pay't Patch				\$ 2.60
	Tap by Moquin				\$
					\$
					\$
	O'head				\$ 66.35

100-1950

Sanford

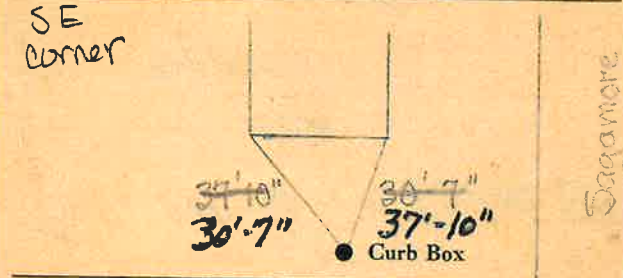
St. -Pl- Ave. No. 167

Name of Owner

Murphy

Labor and Mat'l. Report

Oct 30 19 50



6" Main

Elev. of Main at tap 4"

Gate at • Gate at

Sanford

TAX ID# 303.9-14-10

• Curb Box

Tap on Sanford St.

32' to MAIN THE WATER MAIN ON SAGAMORE IS EXACTLY 5' FROM CURB. (TM)