

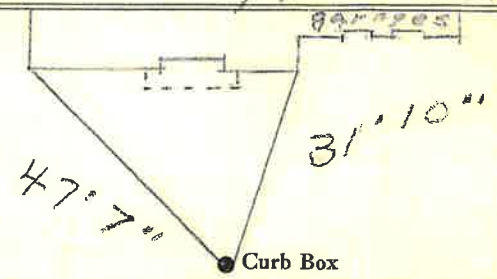
LABOR AND MATERIALS

1	Copper	} Connection	3/4"	\$
	Lead			
1	Curb	} Valve	3/4" in.	\$
1	Service box	} Short 3 1/2 x 4 1/2		\$
	Old returned			
4.4	Ft. 3/4 in.	} Pipe at		\$
	Nipples	in. at		\$
	Bushings	to in. at		\$
	Red'g	} Coupl'gs	to in. at	\$
	Inc'g			
	Union	in. at		\$
	Meter	in. at		\$
	Lead Joints at			\$
	Compound Joints at			\$
	Maintenance Foreman			\$
	Hrs. Water Maint. Man-1 at			\$
	Hrs. Water Maint. Man-2 at			\$
	Hrs. Garage Foreman at			\$
	Hrs. Labor at			\$
	Hrs. Compressor at			\$
	Compensation Ins. at \$	per C		\$
	Trucking			\$
	Pav't Patch			\$
	Tap by Giggard & Peterson			\$
	9-10-62.			\$
	O'head			\$

Sargent St. Pl. Ave. No. 18

Name of Owner Joseph Demeo

Labor and Mat'l. Report Sept 10 1962



6" C.I. Main Elev. of Main at tap 5 1/2"

Gate at • Gate at

TAX ID # 302.8-2-44  
Queensbury

44' to MAIN  
3/4" COPPER