

Labor and Materials

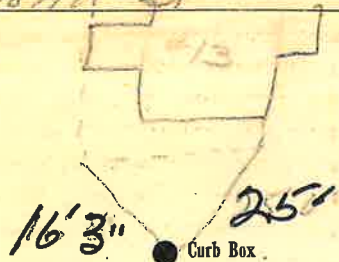
1. Copper	} Connection	3/4	\$ 1.50	
1. Lead					
1. Curb	} Cock Valve T.S.&V.	3/4	in	\$ 1.70
1. Service Box Old returned					
	} Short 3 1/2 x 4 1/2 Long 4 1/2 x 5 1/2 Buff. or Rdwey			\$ 1.54
1. 10 Ft. 3/4 in.					
	} Copper Galv. Iron Cast Iron	} Pipe at	\$ 1.90	
Nipples					in. at
Bushings to in. at	\$	
Red'g Inc'g	} Couplings to in. at	\$
Union					
Meter in. at	\$		
Lbs. Br. Stone	at	\$		
Lbs. Sand	at	\$		
Bags Cement	at	\$		
Paving Brick	} Mack Red Asphalt	} at	\$	
Lead Joints					at
Leadite Joints	at	\$		
3 Hrs. Foreman	at	62 hr.	\$ 1.89	
4 Hrs. Common Labor	at	50	\$ 2.-	
5 Hrs. Common Labor	at	45	\$ 2.25	
Hrs. Mason	at	\$		
Hrs. Masons Helper	at	\$		
Hrs. Compressor	at	\$		
Compensation Ins	\$ 0.75		
Trucking	\$ 1.-		
Builders Use of Water	\$		
Total \$				13.99	

118 34

Labor and Material Report

Sept 22 1934

13 Second St



6" Main

Elev. of Main at tap 5 1/2'

Gate at TAX ID # 309.12-8-15 Gate at

● Curb Box

old shut off at
main

10' to MAIN
3/4" COPPER

Jerry Murphy