

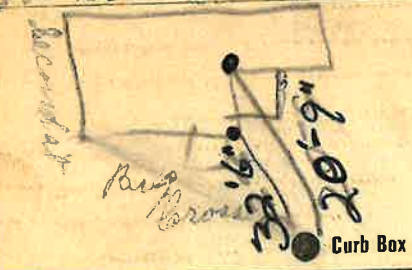
Labor and Materials

1	Copper	Connection	3	\$ 3.20
1	Lead		3	\$ 1.00
1	Curb	Cock Valve T. S. & V.	1	\$ 1.30
1	Service Box	Short 3" x 4"		\$ 1.20
	Old returned	Buff. or Midway		
10	Ft.	Copper Galv. Iron Cast Iron	3	\$ 2.20
	Nipples	in. at		\$
	Bushings	to in. at		\$
	Red'g. Inc'g	Couplings to in. at		\$
	Union	in. at		\$
	Meter	in. at		\$
	Lbs. Br. Stone	at		\$
	Lbs. Sand	at		\$
	Bags Cement	at		\$
	Paving Brick	Mack Red Asphalt at		\$
	Lead Joints	at		\$
	Leadite Joints	at		\$
4	Hrs. Foreman	at		\$ 2.50
10	Hrs. Common Labor	at		\$ 4.60
	Hrs. Common Labor	at		\$
	Hrs. Mason	at		\$
	Hrs. Mason's Helper	at		\$
	Hrs. Compressor	at		\$ 1.70
	Compensation Ins.			\$ 1.00
	Trucking			\$
	Builders' Use of Water			\$
Total				\$ 15.43

28-98

Labor and Material Report Aug 10 19 29

38 second at



6" Main Elev. of Main at tap 4 1/2'

Gate at TAX ID # 309.12-10-24 Gate at

● Curb Box

Old tap shut off
10' to MAIN
3/4" copper