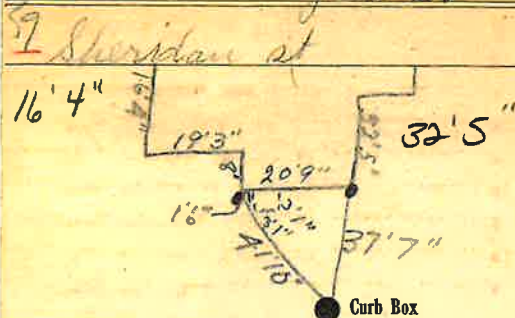


**Labor and Materials**

Copper } Connection.....	3	\$ 1.50
Lead } .....		
Curb { Cock Valve } .....	1	\$ 1.70
Service Box { Short 3 1/2 x 4 1/2 } .....		
Old returned { Long 4 1/2 x 6 1/2 } .....		\$ 1.00
2 5/8 Ft. 3/4 in. { Copper } Pipe at .....		\$ 4.75
{ Galv. Iron } .....		
{ Cast Iron } .....		
Nipples .....		\$ .....
Bushings .....		\$ .....
Red'g } Couplings.....		\$ .....
Inc'g } .....		\$ .....
Union.....		\$ .....
Meter.....		\$ .....
Lbs. Br. Stone at .....		\$ .....
Lbs. Sand at .....		\$ .....
Bags Cement at .....		\$ .....
Paving Brick { Mack } at .....		\$ .....
{ Red } .....		
{ Asphalt } .....		
Lead Joints at .....		\$ .....
Leadite Joints at .....		\$ .....
3 Hrs. Foreman at .....	67.12	\$ 1.88
6 Hrs. Common Labor at .....	45	\$ 3.60
Hrs. Common Labor at .....		\$ .....
Hrs. Mason at .....		\$ .....
Hrs. Masons Helper at .....		\$ .....
Hrs. Compressor at .....		\$ .....
Compensation Ins .....		\$ 0.19
Trucking .....		\$ 1.-
Builders Use of Water <i>Part. Patch</i> .....		\$ 2.50
<b>Total</b>		<b>\$ 18.56</b>

35 34

Labor and Material Report June 28 19 34



6 Main

Elev. of Main at tap *4 1/2*

Gate at **TAX ID # 302.19-3-20** Gate at

● Curb Box

*New House*  
*25' to main*  
*3/4" copper*  
*MB*