

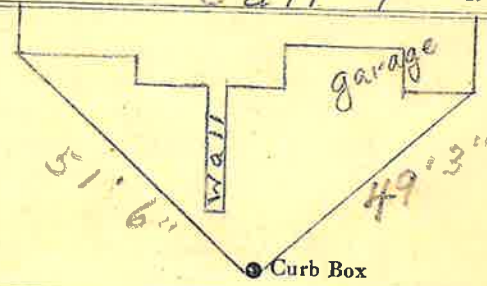
LABOR AND MATERIALS

1	Copper Lead	Connection	3/4"	\$
1	Curb	Cock Valve T.S. & V.	3/4 in.	\$
1	Service box	Short 3 1/2 x 4 1/2		
1	Old returned	Long 4 1/2 x 5 1/2		
		Buff or Rdway		\$
24	Ft.	3/4 in. Copper G.I. G.I.	Pipe at	\$
	Nipples	in. at		\$
	Bushings	to in. at		\$
	Red'g Inc'g	Coupl'gs	to in. at	\$
	Union	in. at		\$
	Meter	in. at		\$
	Lead Joints	at		\$
	Compound Joints	at		\$
	Maintenance Foreman			\$
	Hrs. Water Maint. Man	1 at		\$
	Hrs. Water Maint. Man	2 at		\$
	Hrs. Garage Foreman	at		\$
	Hrs. Labor	at		\$
	Hrs. Compressor	at		\$
	Compensation Ins.	at \$ per C.		\$
	Trucking			\$
	Pay't Patch			\$
	Tap by Gifford & Co.			\$
		1-7-57		\$
	O'head			\$
				\$

St. Sheridan  
 Pl. 79  
 Ave. No. 79

Name of Owner Parker

Labor and Mat'l. Report Jan 7 1957



6" Main Elev. of Main at tap 4 1/2'

Gate at • Gate at

TAX ID# 302.19-3-13

• Curb Box  
 24' to main  
 3/4" copper  
 NO SMUTS OFF  
 IN HOUSE