

Sherman

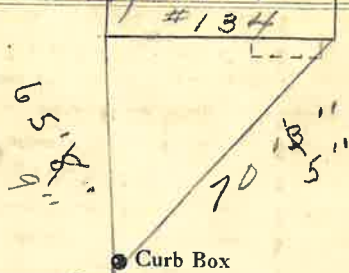
St.
Pl.
Ave. No.

Name of Owner

For Senior H.S. Field

Labor and Mat'l. Report

Apr. 9 1956



6" Main Fence Elev. of Main at tap 5"

Gate at • Gate at •

24' to main

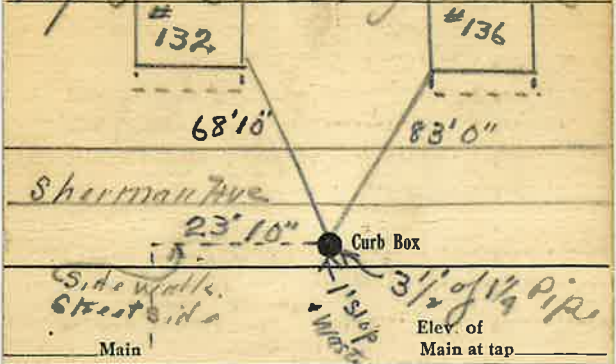
3/4" COPPER

• Curb Box

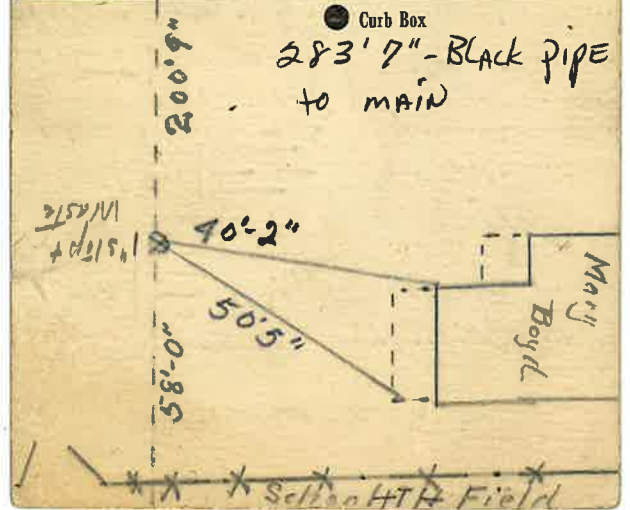
This curb box
Measured from
#134 SHERMAN

Labor and Material Report July 3 1956

Top for school grounds



Gate at • Gate at •



School H.S. Field

LABOR AND MATERIALS

| | | | | |
|----|-------------------------|----------------------|---------|----|
| 1 | Copper Lead | Connection | 3/4" | \$ |
| 1 | Curb | Cock Valve T.S. & V. | 3/4 in. | \$ |
| 1 | Service box | Short 3 1/2 x 4 1/2 | | |
| ? | Old returned | Long 4 1/2 x 5 1/2 | | \$ |
| 24 | Ft. 3/4 in. | Copper G.I. G.I. | Pipe at | \$ |
| | Nipples | in. at | | \$ |
| | Bushings | to in. at | | \$ |
| | Red'g Inc'g | Coupl'gs to in. at | | \$ |
| | Union | in. at | | \$ |
| | Meter | in. at | | \$ |
| | Lead Joints | at | | \$ |
| | Compound Joints | at | | \$ |
| | Maintenance Foreman | | | \$ |
| | Hrs. Water Maint. Man-1 | at | | \$ |
| | Hrs. Water Maint. Man-2 | at | | \$ |
| | Hrs. Garage Foreman | at | | \$ |
| | Hrs. Labor | at | | \$ |
| | Hrs. Compressor | at | | \$ |
| | Compensation Ins. | at \$ per C | | \$ |
| | Trucking | | | \$ |
| | Pav't Patch | | | \$ |
| | Measured in April | | | \$ |
| | 1956 | | | \$ |
| | O'head | | | \$ |

Labor and Materials

| | | | | |
|-----|-----------------------|-----------------------------|----------------------|----|
| | Copper Lead | Connection | 1" | \$ |
| 1 | Curb | Cock Valve T.S. & V. | 3/4 in. Stop & Waste | \$ |
| | Service Box | Short 3 1/2 x 4 1/2 | | |
| | Old returned | Long 4 1/2 x 5 1/2 | | \$ |
| 283 | Ft. 7 in. | Copper Galv. Iron Cast Iron | Pipe at Black Pipe | \$ |
| 1 | Nipples | 3/4 in. | Change | \$ |
| 2 | Bushings | 1" to 1 1/2 in. | | \$ |
| 1 | Red'g Inc'g | Couplings | 3/4 to 1 1/4 in. at | \$ |
| 2 | Union | 1 1/4 in. | | \$ |
| 3 | Meter | in. | 1 1/4" F.I.D. | \$ |
| 2 | Lbs. Br. Stone | at | 1 1/4" Nipples | \$ |
| 7 | Lbs. Sand | at | 1 1/4" Cap. | \$ |
| | Bags Cement | at | | \$ |
| | Paving Brick | Mack Red Asphalt | at | \$ |
| | Lead Joints | at | | \$ |
| | Leadite Joints | at | | \$ |
| | Hrs. Foreman | at | | \$ |
| | Hrs. Common Labor | at | | \$ |
| | Hrs. Mason | at | | \$ |
| | Hrs. Masons Helper | at | | \$ |
| | Hrs. Compressor | at | | \$ |
| | Compensation Ins. | | | \$ |
| | Trucking | | | \$ |
| | Builders Use of Water | | | \$ |

Total \$.....