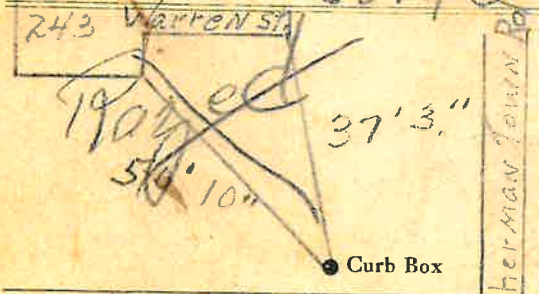


LABOR AND MATERIALS

1	Copper	Connection	3/4"	\$	2.70
	Lead				
1	Curb	Cock Valve T.S. & V.	3/4" in.	\$	2.39
1	Service box	-Short 3 1/2 x 4 1/2 -Long 4 1/2 x 5 1/2 -Buff or Rdway		\$	1.45
	Old returned				
16 Added		Copper C.I. C.I.	} Pipe at	\$	2.69
47	Ft. in.				
63	Nipples	in. at		\$	
	Bushings	to in. at		\$	
	Red'g	} Coupl'gs to in. at		\$	
	Inc'g				
	Union	in. at		\$	
	Meter	in. at		\$	
	Lead Joints at			\$	
	Compound Joints at			\$	
8	Maintenance Foreman			\$	5.00
3	Hrs. Water Maint. Man-1	at	50	\$	1.50
	Hrs. Water Maint. Man-2	at		\$	
	Hrs. Garage Foreman	at		\$	
8	Hrs. Labor	at	.45	\$	3.60
	Hrs. Compressor at			\$	
	Compensation Ins. at \$	per C.		\$.31
	Trucking			\$	1.00
	Pav't Patch			\$	25.00
				\$	
				\$	
	O'head			\$	
				\$	55.64

Shut off for 1 1/2" galv. Main on Sherman Town Rd. St. Pl. Ave. No.

Name of Owner Measured in
From 243 Warren St.
Remeasured Dec. 14 - 54
Labor and Mat'l. Report July 3, 1930



Warren St. Elev. of Main at tap 5'

Gate at • Gate at
63' to main

1 1/2" galv. Fed by 3/4" Tap off Warren St. • Curb Box