

LABOR AND MATERIALS

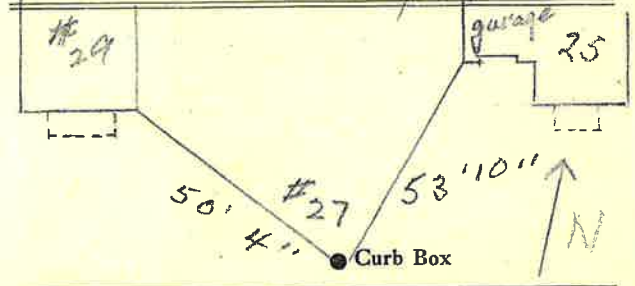
1	Copper	Connection	3/4"	\$
1	Lead			
1	Curb	Cock Valve T.S. & V.	3/4 in.	\$
1	Service box			
1	Old returned			
		Short 3 1/2 x 4 1/2	Pipe at	\$
14	5/4 in.	Long 4 1/2 x 5 1/2		
		Buff or Rdway		
		Copper	Pipe at	\$
		G.I.		
		G.I.		
	Nipples	in. at	\$	
	Bushings	to in. at	\$	
	Red'g	Coupl'gs	to in. at	\$
	Inc'g			
	Union	in. at	\$	
	Meter	in. at	\$	
	Lead Joints	at	\$	
	Compound Joints	at	\$	
	Maintenance Foreman		\$	
	Hrs. Water Maint. Man-1	at	\$	
	Hrs. Water Maint. Man-2	at	\$	
	Hrs. Garage Foreman	at	\$	
	Hrs. Labor	at	\$	
	Hrs. Compressor	at	\$	
	Compensation Ins. at \$	per C	\$	
	Trucking		\$	
	Pav't Patch		\$	
	Tap by Gifford		\$	
	Tap & Co. 5-9-61		\$	
	O'head		\$	

Lot Tap

Shippey St. Pl. Ave. No. 27

Name of Owner
TAX ID # 302.19-21-10

Labor and Mat'l. Report May 9 1961



6" Main Elev. of Main at tap 5'

Gate at • Gate at •

14' to MAIN
3/4" copper
Curb Box
This Tap measured
from #25 to #29
Shippey St. For
#27