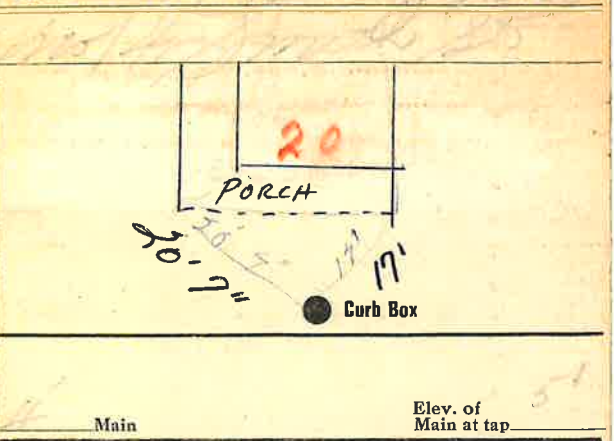


**Labor and Materials**

Copper } Connection.....	\$ 3.20
Lead } .....	
Curb { Cock } .....	
{ Valve } .....	\$ 1.00
{ T. S. & V. } .....	
Service Box { Short 3 1/2 x 4 1/2 } .....	\$ 1.30
Old returned { Long 4 1/2 x 5 1/2 } .....	
{ Buff. or Rdway } .....	
33 Ft. { Copper } Pipe at .....	\$ 7.26
{ Galv. Iron } .....	
{ Cast-Iron } .....	
Nipples..... in. at.....	\$ .....
Bushings..... to..... in. at.....	\$ 1.0
1 Red'g } Couplings..... to..... in. at.....	\$ 1.25
Inc'g } .....	
Union..... in. at.....	\$ .....
Meter..... in. at.....	\$ .....
Lbs. Br. Stone at.....	\$ .....
Lbs. Sand at.....	\$ .....
Bags Cement at.....	\$ .....
Paving Brick { Mack } at.....	\$ .....
{ Red } .....	
{ Asphalt } .....	
Lead Joints at.....	\$ .....
Leadite Joints at.....	\$ .....
2 Hrs. Foreman at.....	\$ 1.25
Hrs. Common Labor at.....	\$ .....
6 Hrs. Common Labor at.....	\$ 2.44
Hrs. Mason at.....	\$ .....
Hrs. Mason's Helper at.....	\$ .....
Hrs. Compressor at.....	\$ .....
Compensation Ins.....	\$ 1.00
Trucking.....	\$ 1.0
Builders' Use of Water.....	\$ .....

Total \$ 17.80



Main Elev. of Main at tap

Gate at ● Gate at

33' to main  
3/4" copper

● Curb Box

*John J. Hunt*

TAX ID # 302.16.5-8