

Labor and Materials

1	Copper Lead	{ Connection	3/4		\$ 1.46
1	Curb	{ Cock Valve	3/4 in.		\$ 1.93
		{ T. S. & V.			
1	Service Box	{ Short 3 1/2 x 4 1/2			\$ 1.77
	Old returned	{ Long 4 1/2 x 5 1/2			
		{ Buff. or Rdway			
11	Ft. 3/4 in.	{ Copper		Pipe at	\$ 2.02
		{ Galv Iron			
		{ Cast Iron			
	Nipples	in. at			\$
	Bushings	to in. at			\$
	Red'g	{ Couplings	to in. at		\$
	Inc'g				
	Union	in. at			\$
	Meter	in. at			\$
	Lead Joints at				\$
	Leadite Joints at				\$
	Hrs. Foreman at				\$
4 1/2	Hrs. Chauffeur at				\$ 31
	Hrs. Tapper at				\$
8	Hrs. Labor at				\$ 3.60
	Hrs. Labor at				\$
	Hrs. Compressor at				\$
	Compensation Ins.				\$ 1.7
	Trucking				\$ 1.-
	Builders Use of Water				\$
					\$
					\$
					\$
					\$
					\$
					\$
					\$ 17.61

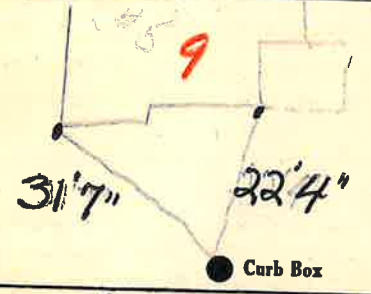
7/27/37
\$ 17.61

182-1937

St. **9**
Pl.
Ave. No. **5**

Name of Owner
Phoenician

Labor and Mat'l. Report *copy* 19



TAX ID # 302.10-6-23

Main Elev. of Main at tap

Gate at 11' to MAIN Gate at

3/4" Copper Curb Box

old shut off

Bill